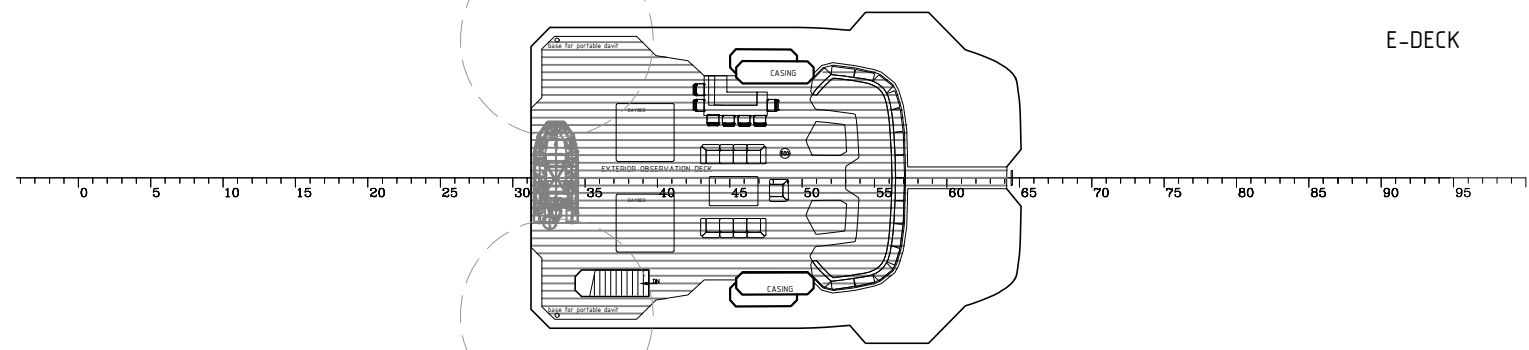
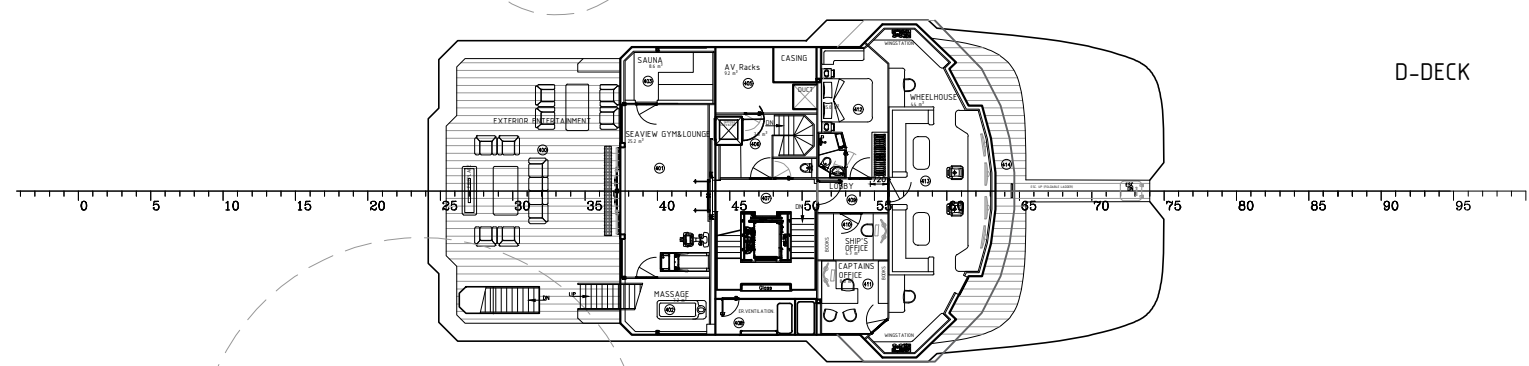


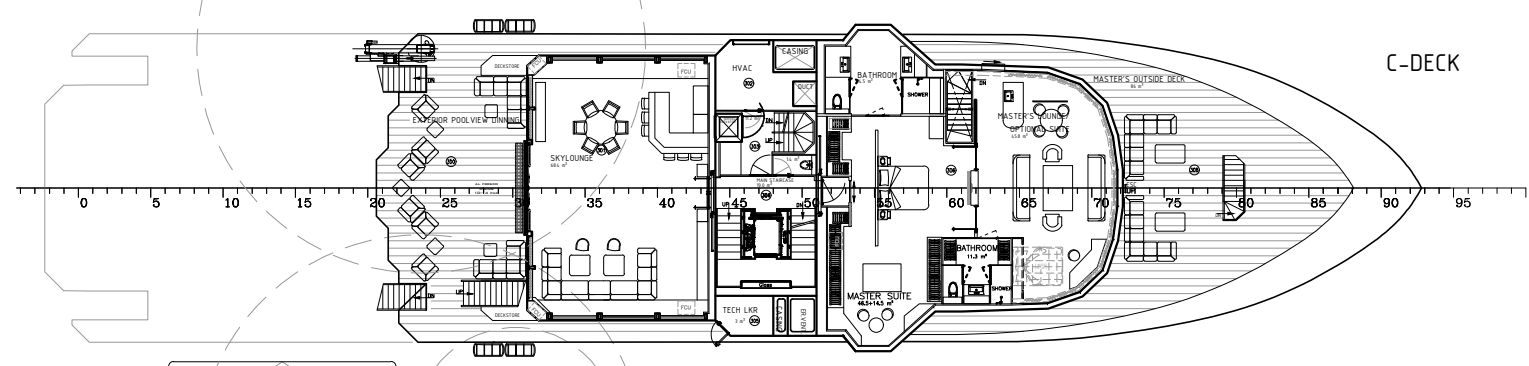
- E-DECK
15150-15050 AB
- D-DECK
12400 AB
- C-DECK
9700-9760 AB
- B-DECK
6950 AB
- A-DECK
4150 AB
- TANKTOP
1000-1150 AB



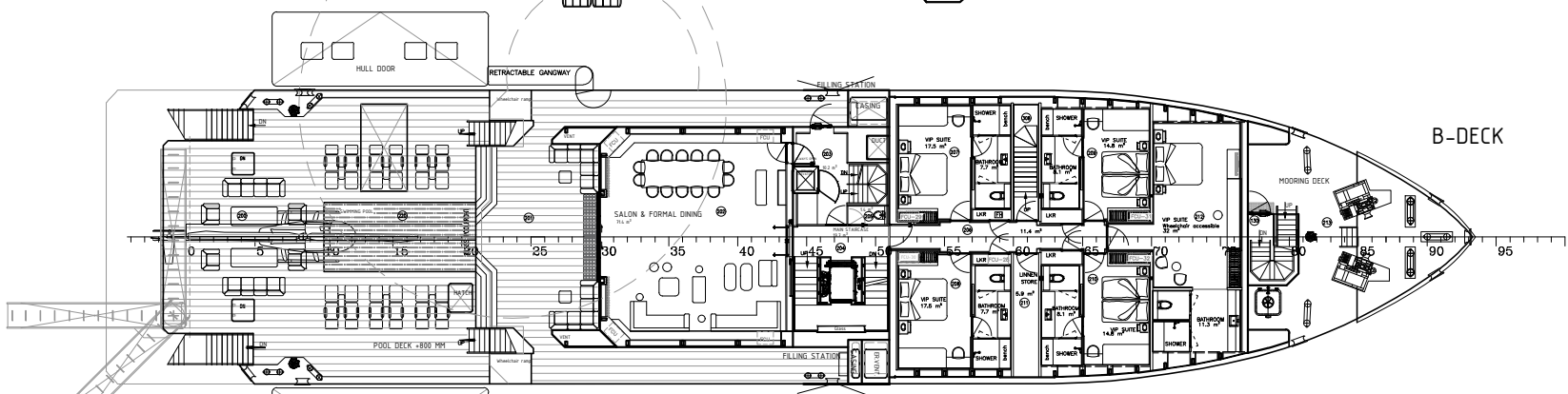
E-DECK



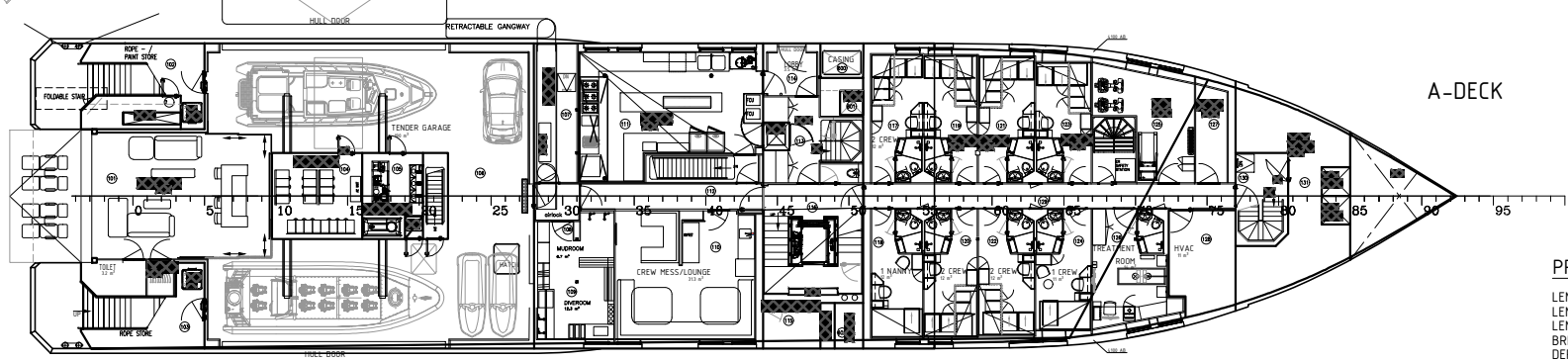
D-DECK



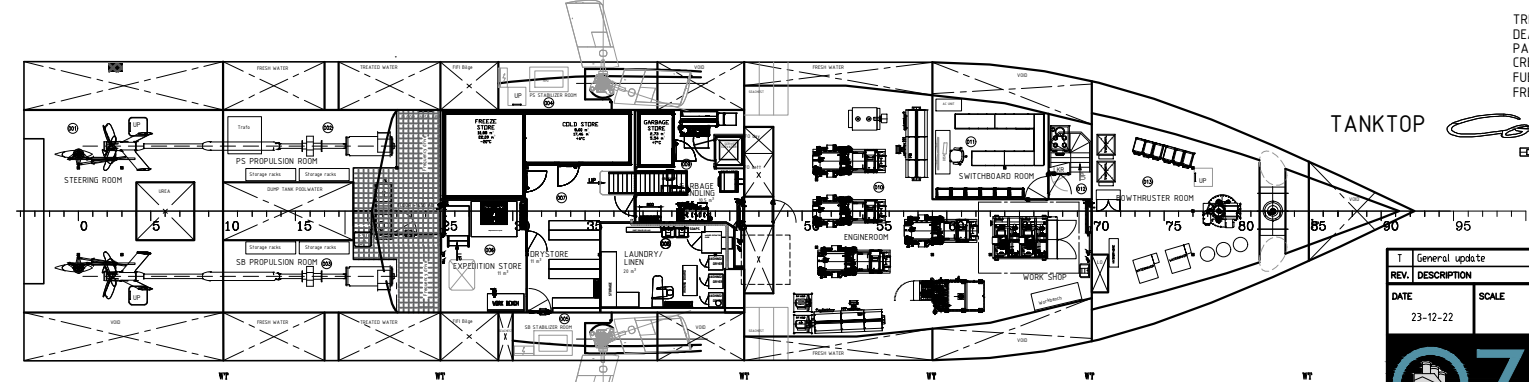
C-DECK



B-DECK



A-DECK



TANKTOP

PRINCIPAL DIMENSIONS

LENGTH OVER ALL	60.50 M
LENGTH BETWEEN P.P.	55.20 M
LENGTH WATERLINE	57.40 M
BREADTH M.L.D.	12.80 M
DEPTH M.L.D.	4.150 M
DESIGN DRAUGHT	3.15 M

TRIAL SPEED	abt. 12 KN
DEADWEIGHT	250 TON
PASSENGERS	12
CREW	16
FUEL ABT.	150 m ³
FRESHWATER ABT.	50 m ³

Cor D. Rover
DESIGN

REV. DESCRIPTION	DATE	BY
1 General update	07-04-23	RTM
23-12-22		
SCALE	DESIGNER	SHEET OF
	JB	1 of 1
DRWG. No.	01301-T	
SUBJECT : POLAR EXPEDITION YACHT		
GENERAL ARRANGEMENT		
CLIENT	OXYZEN	
PROJECT REF.	P22201	
CLIENT'S DOC No.		



THIS DRAWING CONTAINS PROPRIETARY AND CONFIDENTIAL INFORMATION BELONGING TO OXYZEN B.V. AND MUST NOT BE WHOLLY OR PARTIALLY REPRODUCED WITHOUT PRIOR WRITTEN PERMISSION OF OXYZEN B.V. ©2023