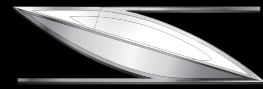




SARPYACHTS



S H I P Y A R D

I N D E X

ABOUT SARP YACHTS	11
AWARDS	14
MEDIA & EVENTS	16
FACILITY	18
LAUNCHED	30
UNDER CONSTRUCTION	36
NEW DESIGNS	52
QUALITY POLICIES	68

T R U E Q U A L I T Y

Easy words to say, but few stand in their own truth when they speak them, because true quality is demanding. It calls for the purest principles, the deepest commitments and only the truly dedicated will ever measure up.

But it's worth the search if you can find the road. There are subtle landmarks along the way and a discovery that drives you forward, and when you find true quality, it'll stop you in your tracks.

A supremely crafted superyacht is an unforgettable discovery, and it also tells a story. A story of absolute precision, trusted engineering, the finest materials and beautiful spaces, designed to be shared. Ultimately it's a story of those who built the yacht and their deep seated passion and determination to craft perfection.

When this comes to life in an exceptional superyacht, you can be sure you've uncovered true quality. Yours, to enjoy and a story to continue.

Sarp Yachts, the quality life deserves.



At Sarp Yachts we take the long road to quality investing the time, refining the detail, gathering the best around us and expecting the best of ourselves.

We believe when you craft things of beauty to create experiences to last, there's no other way to achieve it.

Our expert in-house team ensured us to achieve three certificates of Quality Evaluations from the American Bureau of Shipping. We make sure the company we keep is both talented and respected, working with industry experts.

Our philosophy and attitude underpin the way we work with deep-seated passion and determination to craft perfection.

Emre Sandan
Shipyard Manager



ISO 9001



ISO 14001



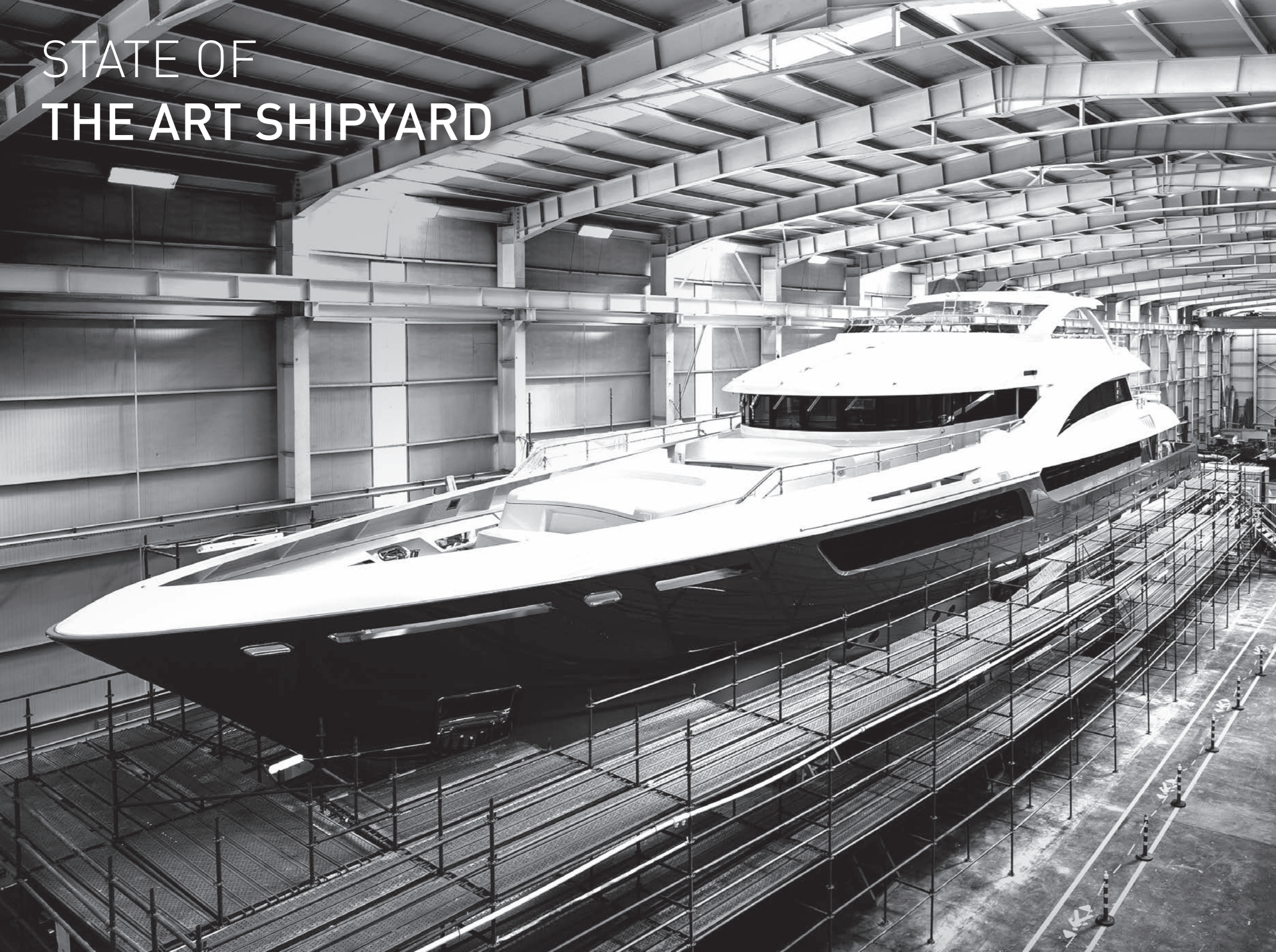
OHSAS 18001

OUR FAMILY FOUNDATION KEEPS IT PERSONAL.

Sarp Yachts is proudly owned by the Kanatli family. The family lead the way in a spectrum of business categories including aeronautics, logistics, insurance, food and marine industry, with more than 7,000 employees. They are significant organisations, but collaboration with partners and clients is the key to the way we work – we will always keep it personal.



STATE OF THE ART SHIPYARD



Sarp Yachts has founded one of the largest and most modern facilities in the Free Zone of Antalya in South Turkey. It's specifically designed for the new construction and refit of luxury motor and sailing yachts. 10,000 m² of yard area. Necessary covered areas equipped with forced heating and ventilation systems, emission treatment systems and all other utilities; such as Carpentry, Furniture, Electrical, Plumbing, Mechanical & Fiberglass Workshops, designed for large yachts up to 80m in length.

Sarp Yachts is the only shipyard which has Integrated Quality Management System with ISO 9001 & ISO 14001 & ISO 18001 OHSAS from American Bureau Shipping (ABS) in the Free Zone of Antalya.

A D V A N T A G E S



- Perfectly established infrastructure.
- VAT, income and corporate tax exemption.
- No importation regime applied.
- Competent labour force in easy reach.
- Specialized subcontractors.
- Vessel carriage & launching facilities.
- Available berths for final outfitting.
- Harbour and sea trials.



ANTALYA FREE TRADE ZONE



- YACHT MAINTENANCE (REFIT) AREA
- A: WORKSHOPS
- B: OFFICES
- C: YACHTS EQUIPMENT & STORAGES
- D: SYNCROLIFT (HAUL & LAUNCH) / 2000 Tons
- E: HAUL, LAUNCH & SERVICE AREA FOR SHIPYARDS
- F: TRAVEL LIFT / 500 Tons
- FREE TRADE ZONE WATERSPACE
- G: MOORING & MANEUVERING AREA
- SETUR MARINA
- H: SETUR MARINA

- 372 yachts total trade value of \$ 957 million have been completed.
- 70 yachts have been constructed over 30 meters and the average length is 20 meters.
- Hauling & launching 600 tons capacity, to be upgraded with syncrolift at March 2021 to 2,000 tons of max 90m LOA. All classification provided.
- Longside shore dedicated for berths.
- Shore power up to 400 A.
- Calm water area, ideal for performing stability experiments and other works.
- Moorings, Lifting and Launching facility.



THE WORLD SUPERYACHT AWARDS

THE AUDIENCE

Of the 514 guests attending the World Superyacht Awards in 2018:

297 were part of the superyacht industry

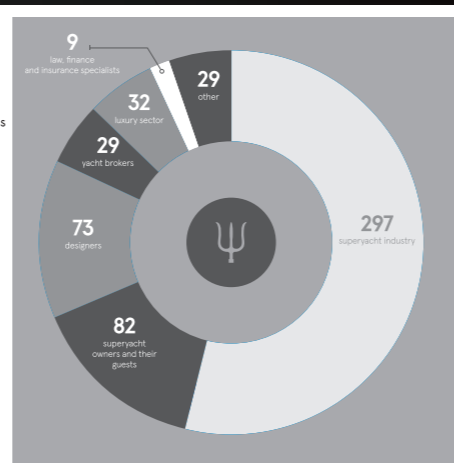
82 were superyacht owners and their guests

73 were designers

29 belonged to the broker sector

32 belonged to the luxury sector

9 were law, finance and insurance specialists



The Oscars of the Superyacht Industry

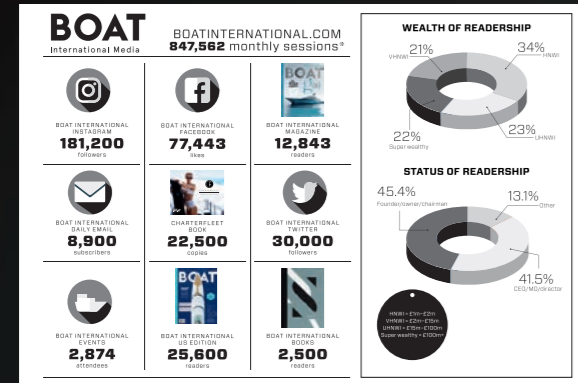
Attended by a who's who of the luxury yachting world, 700 guests including superyacht owners, designers, top shipyard executives and ultra-high net worth individuals gather annually for the World Superyacht Awards for 14 years. The event is curated to provide unique networking opportunities and to associate brands with what is regarded as the pinnacle of luxury. A fully integrated cross platform campaign maximise the media impact of the event and deliver significant brand exposure. WSA reached more than 8.500.000, with a media value of almost €4.400.000 across owned and wider media platforms.

Sarp Yachts has participated WSA as Event Partnership and Sponsorship for brand exposure on WSA pre-event marketing campaign (print and online) and on-site branding (sponsor loop, banners, media wall, event programme) Sarp Yachts 46m LA PASSION won the World Superyachts Awards 2017, Displacement Motoryacht Category below 500 GT, 43mt and above.

A W A R D S

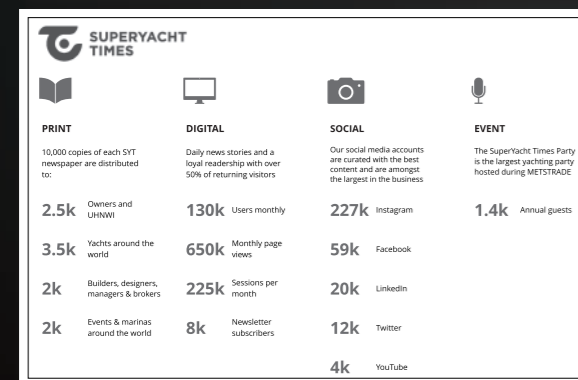
	WINNER XSR 155 GERMAN DESIGN AWARD AVIATION, MARITIME & RAILWAY 2020		PLATINUM WINNER XSR 155 A'DESIGN AWARDS YACHT & MARINE VESSEL DESIGN 2019		SPECIAL MENTION XSR 85 GERMAN DESIGN AWARD AVIATION, MARITIME & RAILWAY 2019
	WINNER NACRE 62 GERMAN DESIGN AWARD AVIATION, MARITIME & RAILWAY 2019		BRONZE WINNER XSR 85 A'DESIGN AWARDS YACHT & MARINE VESSEL DESIGN 2018		GOLDEN WINNER NACRE 62 A'DESIGN AWARDS YACHT & MARINE VESSEL DESIGN 2018
	GOLDEN WINNER Aouda 63 A'DESIGN AWARDS YACHT & MARINE VESSEL DESIGN 2017		BRONZE WINNER Aouda 63 A'DESIGN AWARDS INTERIOR SPACE & EXHIBITION DESIGN CATEGORY 2017		WINNER LA PASSION WORLD SUPERYACHT AWARDS DISPLACEMENT below 500GT 2017
	FINALIST LA PASSION SHOW BOATS DESIGN AWARDS MOST INNOVATIVE MOTOR YACHT 2017		FINALIST LA PASSION SHOW BOATS DESIGN AWARDS BEST EXTERIOR DESIGN & STYLING below 48M 2017		FINALIST LA PASSION SHOW BOATS DESIGN AWARDS BEST INTERIOR LAYOUT & DESIGN below 500GT 2017
	FINALIST LA PASSION SHOW BOATS DESIGN AWARDS MOST INNOVATIVE MOTOR YACHT 2017		WINNER LA PASSION WORLD YACHTS TROPHIES REVELATION OF THE YEAR 2016		WINNER LA PASSION COMPOSITE SUMMIT MOST INNOVATIVE PRODUCT 2015
	WINNER LA PASSION DESIGN ET AL YACHT & AVIATION AWARDS CONCEPT OVER 40M YACHTS 2015		GOLDEN WINNER LA PASSION A'DESIGN AWARD YACHT & MARINE VESSEL DESIGN 2015		WINNER SARP 40 CLASSIC DESIGN ET AL YACHT & AVIATION AWARDS CONCEPT OVER 40M YACHTS 2015
	INTERNATIONAL QUALITY AWARD SARP SHIPYARD ARCH OF EUROPE FRANKFURT 2015				

MEDIA



Sarp Yachts has multi coverages, high-lighted news and advertisements on digital and print media companies which are world-class leadership in superyacht business.

They are the world's most authoritative, trusted and comprehensive brands for the superyacht community, reflecting the lifestyles of the international wealthy elite, attend its events and engage online.

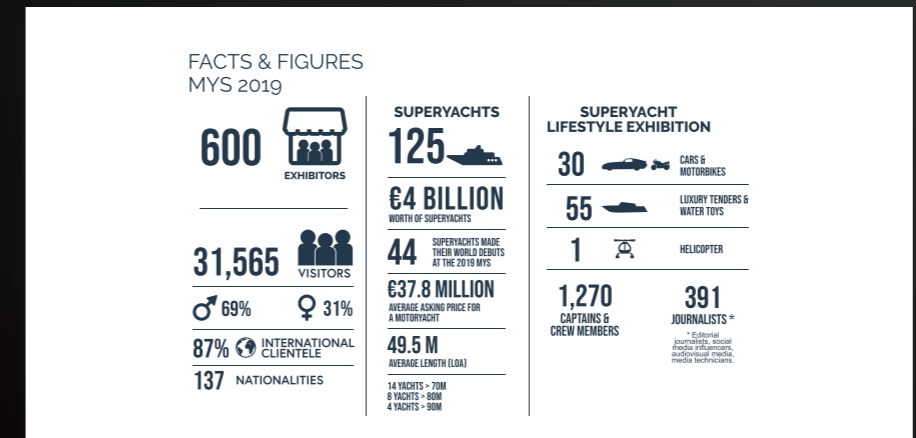


Sarp Yachts has periodically cooperation, partnership and advertising agreements with Boat International, Super Yacht Times, Super Yacht Group, Naviga Turkey, Yacht Turkey and Boat International Turkey.



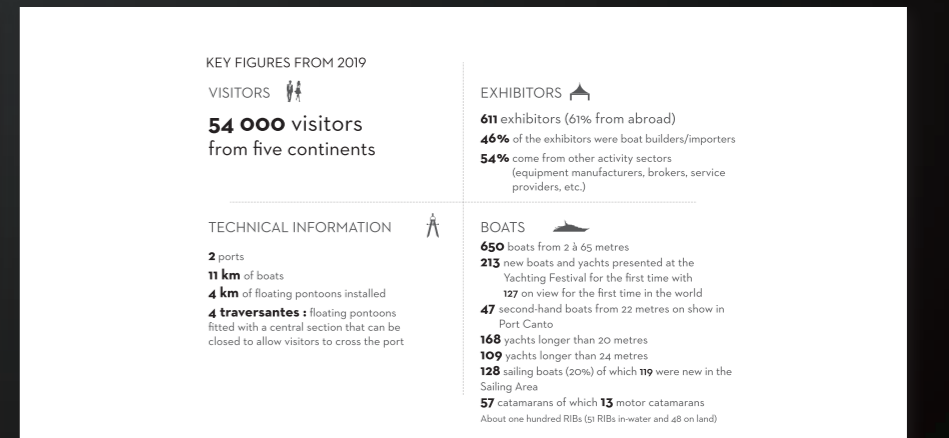
Sarp Yacht has been participating to MYS since 2014. Monaco Yacht Show confirms its status as a major annual event in the world of luxury yachting for 29 years by unveiling some of the latest superyacht projects, technologies and joint ventures.

The show acts as a true catalyst for trends in the yachting world of the future, that the MYS is an absolute must with an attendance of nearly 32.000 visitors every year. MYS showcasing 125 superyachts with an estimated total worth of around €4 billion, including 44 new models and 14 mega yachts over 70 metres.



Sarp Yacht has been participating to Cannes Yachting Festival since 2014. Cannes Yachting Festival consolidating its position as Europe's leading in-water boat show for 42 years; with a wide selection of exhibits (sailing boats, motorboats, monohull, multihull,

new, second-hand, small or large, in-water or on land) while also presenting an enhanced offering with nearly 620 exhibitors and 650 boats from 2 to 65 metres, including 273 new products, 727 of which were making their world debut.





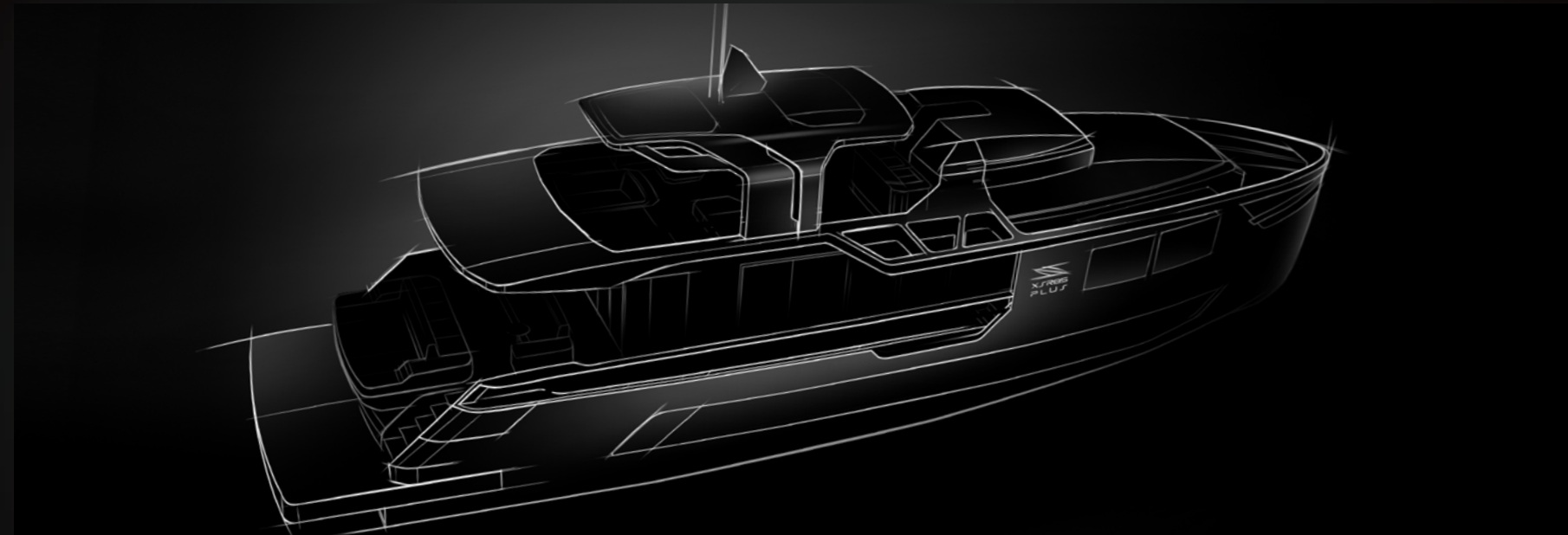
F A C I L I T Y

Probably one of the most controversial talking points in SuperYacht building circles in the question of where a yacht is built, the quality and the cost. Sarp Yachts run a competitive pricing policy and is driven by R&D, efficiency, investment and modern management, supported by a highly skilled workforce operating in high tech environments. To ensure that Sarp Yachts can deliver world class yachts at sensible, highly competitive prices, we have various policies in place to cover quality, the environment, occupational health & safety and social responsibility. Sarp Yachts offers fully integrated services at its state-of-the-art facility in the Free Zone Antalya, on the beautiful South coast of Turkey. The shipyard features hauling and launching capacity up to 600 metric tons, soon to be upgrade to 2,000 tons. Antalya area is an exceptionally pleasant environment: the 630 km shoreline of the province is literally scattered with ancient cities, harbours, memorial tombs and beaches, secluded coves and lush forest, many of which are easily accessible from the city.

An exceptional superyacht, built by a yard with superior financial stability, a state of the art Quality Control System and award-winner designs...

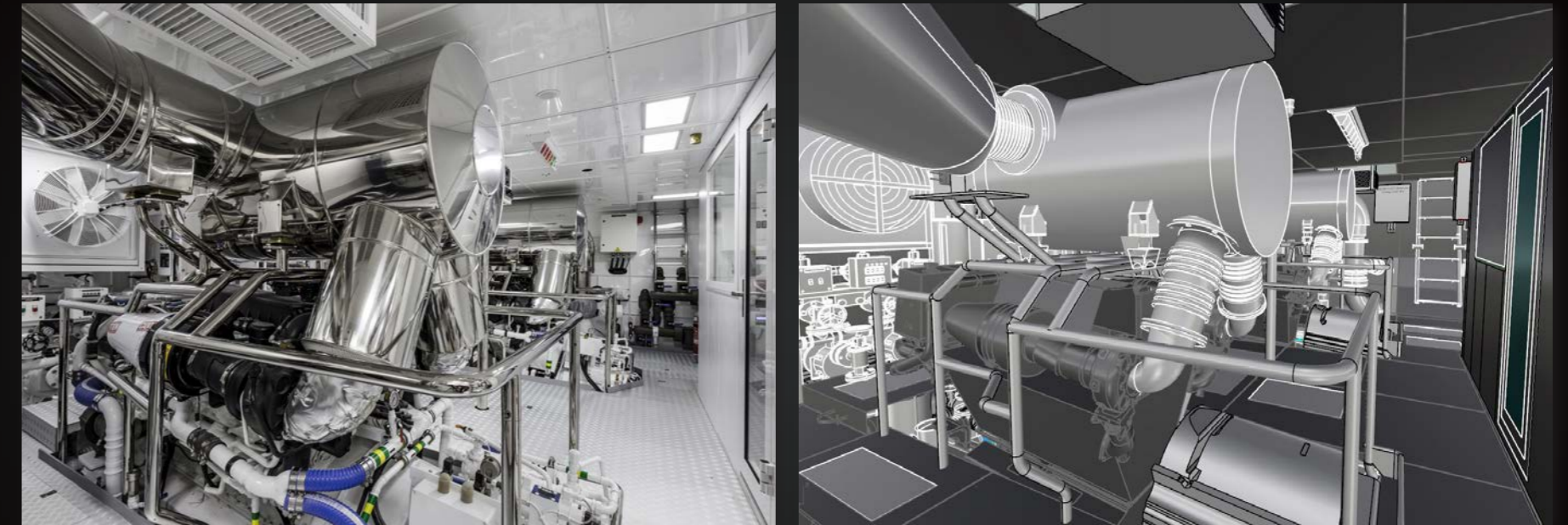
36.844059
30.609159

D E S I G N



Complementing our in-house design team, Sarp Yachts works with the world's most renowned designers. More than ever before, the complexity of design, exotic materials and superior standards, stretch the boundaries of what can be built. Sarp Yachts is one of the very few yacht-builders able to cope and even with such a challenge. We actively seek innovative and unusual projects and recent launches prove our ability to fuse luxury interior craftsmanship with complex exterior engineering. Sarp Yachts' designs have a timeless appeal. Creating an iconic yacht of which an owner can be proud of, is very much part of the design brief we launch.

E N G I N E E R I N G



Sarp Yachts have state-of-the-art engineering. Every detail is thought and tested so that the framework behind the luxury is absolutely reliable. We integrate the most exquisite finery, the most spectacular effects and the most innovative systems. We can include them all because of our way of understanding and exhaustive testing of engineering principles. Using industry-leading design programmes our engineers and naval architects create 3D designs, updated in real time. Every part of the technical team can log into the same data, achieving a reduction in total building time and improvement of quality for the final output. Working in close collaboration with one of the world's foremost naval architects, our in-house experts have total control over the building process from concept to launch. Sarp Yachts offers a broad range of tested platforms on which various projects can be based. A series of tank and propeller tests with programmes designed to analyse the performance, wave keeping and handling qualities on our yachts.

M E T A L W O R K



An experienced team for aluminium - steel hull and superstructure construction; assisted by external specialized companies and subcontractors, whom reached 5,000 tons capacity of steel and aluminum production per year, are available in the shipyard for the precision work required for the design and construction. The advanced technology machinery steel for the construction of the ship, by CNC Plasma cutting of aluminum and stainless steel, bending, machining and chipless manufacturing including WPS procedures and welders certificates.

C O M P O S I T E P R O D U C T I O N



Sarp Yachts is able to manufacture all composite aspects such as plugs, moulds and accessories in-house. Our technicians are also specialized by department: surface, frames, accessories and various other mould assembly process. We can provide internal and external service for composite production pre-studies, structural engineering, workshop drawings due to the classification society and certification authority liaison. We are highly experienced of composite technics such as epoxy vacuum bagging, infusion and RTM processes.

DECK OUTFITTING & JOINERY



The deck outfitting team is made up of experienced shipwrights and engineers who take care of designing, sourcing, fitting and commissioning such items as passerelles, cranes, anchor, mooring equipment, deck winches, sailing hardware, rails, stanchions, windows, port lights, safety equipment, Jacuzzis and splash pools. Sarp Yachts offered internal and external specialized subcontractors available for the work required for deck outfitting. Custom made bollards, fairleads, windlass plates, anchors, anchor pockets, portholes, staircases, handrails, windshields and ventilation grills; produced by 3D measuring. By 3D measuring and modeling, you can see the surface quality at the very beginning. Additionally, you can see the results, high quality polished surfaces, even before the production begins. With this method, the production time and modification costs drop.

Sarp Yachts offering dedicated craftsmanship with experience in joinery. Few shipyards in the world have such a record of accomplishment in carpentry which includes hull repairs and restoration, teak decking, caulking, mould manufacturing, exterior furniture, wood deckhouse construction & all structural modification works.

P A I N T I N G



Over the years of experience and production, Sarp Yachts can offer internal and external service dedicated to yacht paint application: preparation, protection, treatment (sanding, fairing, cleaning) and finishing. Air temperatures are continuously controlled with other parameters such as hull temperature and air humidity, – is monitored and recorded to ensure a superb paint finish. A faultless finish demands rigorous initial conditions.

With its extensive experience, Sarp Yachts is ideally placed to advise customers on the best choice of paint to meet their specific needs. Sarp Yachts developed best practices capable of ensuring an exceptionally clean atmosphere and minimizing the risks of dust contamination (access strictly controlled under confinement during paint application phases). Special attention is given to ventilation and extraction systems, regular filter cleaning, regular servicing of paint application equipment, and proper use of personnel protective gear (clothing, masks, etc.).

E L E C T R I C A L



Sarp Yachts offered internal and external service to advice, design and install all types of cutting edge electrical and electronic systems and equipment. Starting with power generation, storage, conversion and distribution; we source our electrical panels and switchboards from tried and trusted manufacturers. Our cable installations are completed to the highest marine and class specifications with all cables being neatly installed and individually tagged.

M E C H A N I C A L & P L U M B I N G



Sarp Yachts provides internal and external service that delivers complete mechanical and plumbing solutions such as HVAC systems, plumbing, hydraulics, exhaust systems, refrigeration, separators, water makers, water treatment systems, boilers, fans, and virtually any mechanical system needed; with a supported by team of multilingual, multi-talented engineers, technicians and on-site crew. We work with the best equipment available and deliver high end quality finishes. Our installations are impressive at the geometric dexterity required to map out the complex pipe runs involved. From fuel and hydraulic lines to fire suppression and basic plumbing, it's a three-dimensional mash-up that offers the opportunity to update due to the practical construction and maintenance of those systems.

I N T E R I O R S



Sarp Yachts offers internal and external service for interiors. Sarp Yachts in-house craftsmen will ensure perfection on furniture and all wood fittings following years of experience; with any choice of wood, including leather lining, natural stone applications, metal details, decorative glasses and mirrors, textile lining & cabinetry. With access to every part of the interior, even service areas; to fit the complex pipework and cabling as well as insulation and soft mountings to prevent noise and vibrations through the structure and the accommodation. Interiors are built in compliance with current Class, Flag State and MCA regulations. Sarp Yachts can rely on a network of specialists for interior joinery and furniture, 3D modeling, rendering, upholstery, leather lining and other specialist outfitting required for interior manufacturing.





L A U N C H E D



LA PASSION



46 M

Interior Designer: Adam Lay | Exterior Designer: Osman Tanju Kalaycıoğlu



SLEEK CURVES & PINPOINT PROPORTIONS

A beautiful, contemporary 46 m superyacht, to give it all the fresh, individual and timeless qualities with a wide 9-meter beam. Her hull still retains a proportionally sleek silhouette, with a flared, fine bow shape not only pleasing to the eye but also saves on gross tonnage. The superstructure concept design is the true artistic creation here, giving the vessel her distinct character in harmony with the modern, curvy shape. It's our focus on detail, commitment to quality and design integrity that add up to making this yacht so distinctive and desired.



LA PASSION



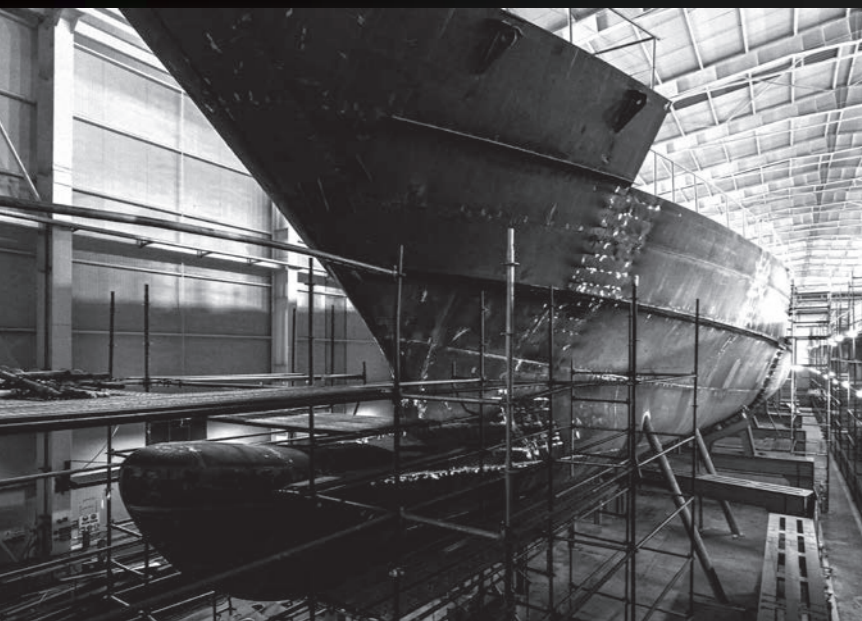
46 M

Interior Designer Adam Lay | Exterior Designer Osman Tanju Kalyayoglu



AT EASE, AT HOME AND A LITTLE BIT SPOILED

La Passion is a thoughtfully balanced blend of styles that combine to create her own distinct style. In many ways, the interior reflects a meeting point between Eastern and Western cultures, a stylish mix of silver, bronze and grey with luxurious fabrics and detailing. Nature is at the heart of the design inspiration, with a harmony of colours and natural materials that lay the foundation for bolder accents of interest. Glass screens feature elegantly designed branches and leaves with the dark grey ash wall panelling providing the backdrop for more colourful detailing and organic light fittings at Main Saloon. The full beam Bridgedeck Saloon is a less formal space with large windows providing a strong connection to the ocean. Accessed through the Owner's Study the spacious Owner's Suite is thoughtfully designed as the perfect retreat. The large bed on centreline is recessed slightly into the aft bulkhead to give a cosy, protected feeling with a pop-up TV in the centreline cabinet forward. His and her dressing rooms and bathrooms are generous and luxuriously detailed. Two Double Cabins aft and twin Single Cabins forward are generously proportioned and designed with flexibility in mind.



U N D E R
C O N S T R U C T I O N



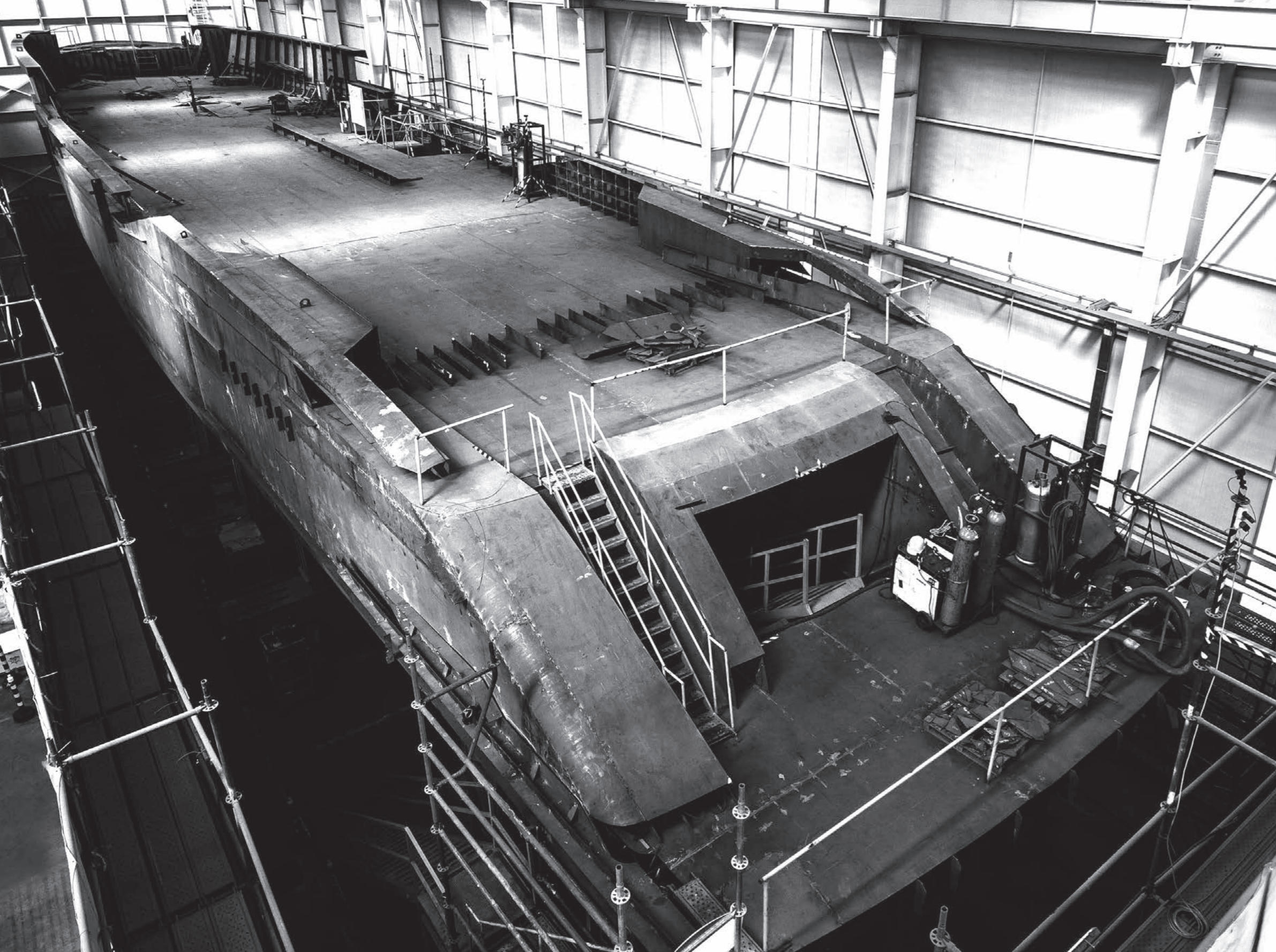
N A C R E 62 M



Interior Designer TBD | Exterior Designer Hot Lab | Naval Architecture Van Oossanen



Nacre forms the heart of a pearl's beauty. It is the beautiful crystalline shine that gives pearls their lustre, the iridescence that has beguiled mankind for generations. Sarp Yachts has named its next generation yacht after this highly prized, strong and resilient treasure. Nacre 62 is a sleek, luminous yacht with every luxury imaginable. Its technological superiority is matched by the beauty of its hand-worked craftsmanship, including exquisite inlays of lustrous nacre throughout the interior. Layers of elegant opulence to create your own pearl of the sea...The exterior design of MY Nacre is typically evergreen. The bow is classic without following the last trends, and generally the design is a balance between elegance, sporty, modern and classic. Nacre 62mt is ideal for families looking for a luxury vacation. Her extensive exterior areas and extended swim platform offer unparalleled means of enjoying her cruising grounds. Beach Club with self-bar, steam shower with dressing and lounge sofas provides the perfect environment for the guests. The side folding hatches enlarges the area at maximum space and guests can have the water-edge feeling for a swim and a cocktail. Main deck aft is outfitted with sunbeds, lounge chairs and dining table for socializing; a glorious space for viewing the horizon or enjoying the company of friends and family.



N A C R E 62 M



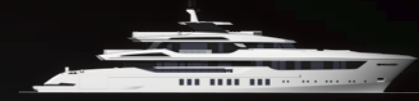
Interior Designer TBD | Exterior Designer Hot Lab | Naval Architecture Van Oossanen



Full height windows of the main saloon allow immersing the yacht into nature bringing the outdoors in. The owner suite is big and is located forward on the main deck. This area is "wide body", the windows are big enough for having a lot of natural light from outside but the design is fluent and elegant. The aft section of the upper deck is inspired by the car design, and the windscreen is backward for having a big "bonnet" forward. These details make the design of the yacht a bit sporty without losing elegance. The upper sky lounge is "wide body" as well, the windows are almost totally full height and the structure is slim. This layout allows 270° of free view from inside. As part of Sundeck, a dedicated bar and seating area with generously sized is the perfect spot for some after-hours entertaining, whilst the pool attached on the Sundeck is fantastic for some midday refreshment. Pop-up elevator serving from Accommodation Deck to Sundeck for guests' comfort. The Yacht is designed and outfitted to accommodate 12 guests and 16 crew; with a total of 28 persons; including a vast full beam Master Suite on the main deck with private office and His & Her separate walk in closets and bathrooms with private balcony, four double Guest Cabins with bathrooms separated shower and toilet areas, walk-in closets and vanity desks. A dedicated GYM area and SPA is located at Accommodation Deck for guests. There are three layout options for Guest Accommodation at Lower Deck.



NACRE TANK TESTS



62 M




CFD 'Computational Fluid Dynamics and the FDHF 'Fast Displacement Hull Form' are tested on Nacre 62. The tank test was held in Wolfson Unit for Marine Technology & Industrial Aerodynamics, Southampton while CFD was performed by Van Oossanen in the Netherlands. Towing tank tests performed in calm water and head seas for a 60 meter motor yacht, in order to investigate its resistance and seakeeping characteristics over a range of speeds. The work was commissioned by Perry Van Oossanen of Van Oossanen Naval Architects. A 1:16 scale model of the vessel was constructed in wood and GRP. The model was designated as Wolfson Unit model M1152 and incorporates a full width transom mounted interceptor, skeg and a bow thruster orifice. The tests were conducted in the Ship Tank, Qinetiq, Haslar. The towing mechanism and instrumentation were supplied and operated by the Wolfson Unit. The tank is equipped with a wave maker capable of producing significant wave heights up to 4.5m at full scale. The results showed that maximum stability and comfort meets the expectations on board during rough waves and bad weather by achieving high levels of efficiency with reduced vibration and fuel consumption.

WOLFSON UNIT
FOR MARINE TECHNOLOGY AND INDUSTRIAL AERODYNAMICS

EXCELLENCE IN PERFORMANCE
VAN OOSSANEN

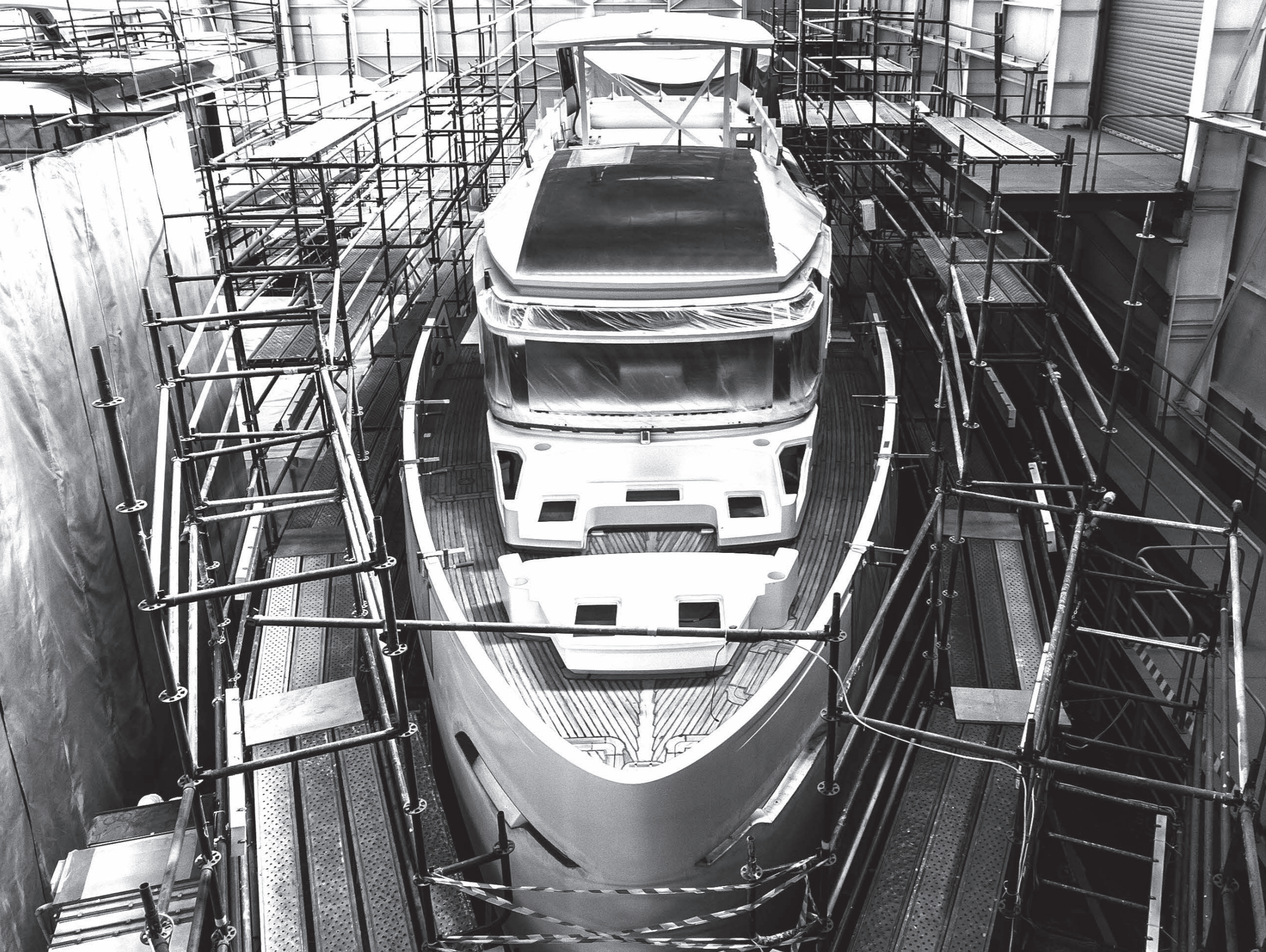


X S R 8 5  26 M

Interior Designer Red Yacht Design | Exterior Designer Red Yacht Design | Naval Architecture Van Oossanen



Silence is the keynote where pleasure enters. In light of our environmentally friendly vision and high level engineering background, Sarp Yachts proudly present its brand new concept yacht family. You have chance to dive into the world of harmony and enjoy the beauty of unharmed nature. Trace back to the beginning, a place you came from and where you truly belong. Do not abandon your family, comfort and safety while living your dream. Lose yourself in an enchanted journey living all the rest to us. The yacht's design is fully inspired by Mother Nature. Sense of exploration has never been so compatible with nature, comfort and luxury at a time. XSR 85 is designed respectful of nature. The key element of the design is the glass arrangement which surrounds the entire salon, giving great lightness and visibility from the inside-out. The use of extensive integrated glass gives the architectural touch to the design for the owner's freedom and flexibility with the unique open-deck feeling. Van Oossanen developed the patented 'Fast Displacement Hull Form' or FDHF. The development of this concept was triggered by the desire to develop a hull form that is efficient over the entire speed range and not only in a restricted speed interval around the maximum speed. Other benefits include significantly increased comfort on-board with better sea keeping and wave reduction. Particularly when compared to hard chine vessels, the FDHF showed improved sea keeping behaviour and manoeuvrability, as well as a reduced sensitivity to an increase in the weight of the vessel.



X S R 8 5 26 M



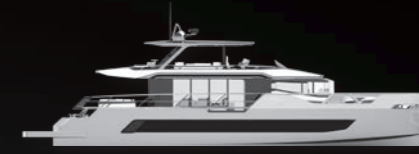
Interior Designer Red Yacht Design | Exterior Designer Red Yacht Design | Naval Architecture Van Oossanen



XSR 85 can accommodate 8 guests and 4 crews. Full-beam Owner Cabin on aft lower deck with bathroom, port Guest Cabin with twin bed and bathroom which can be convertible to TV lounge, starboard Guest Cabin with bathroom, full-beam VIP Cabin on forward with bathroom. XSR 85 interior design aims to give guests a sense of openness. We want you to feel yourself on a remote island, your own island, forgetting that you are on a boat. You will merge with nature the very moment you open the windows. When you descend down the sculptural stairs an unexpectedly large lounge area appears in front of you. Designed with an innovative approach, the lounge provides guests with a complete comfort by turning into a cabin if necessary. A single vertical axis is designed to minimize volume loss and to maximize the interior-exterior relationship. The staircase, inspired by trees, connects the entire yacht. The unique design with organic lines creates an impression of the yacht as a work of art. The kitchenette area, located just below the staircase, offers you a morning coffee or delightful drink to enjoy while watching a movie in the lounge. Aft of the lower deck is dedicated to the master cabin. A full beam cabin is beyond all expectations. Meticulously designed furniture, inspired by nature, imitates world's unique elements. The bathroom is integrated with the cabin to maintain more space without compromising privacy. A full-beam VIP cabin is located at the forward lower deck with separate bathroom area. The vanity top on the hull side and the glass wall with TV behind give the guests maximum comfort and luxury.



XSR 85 HYBRID

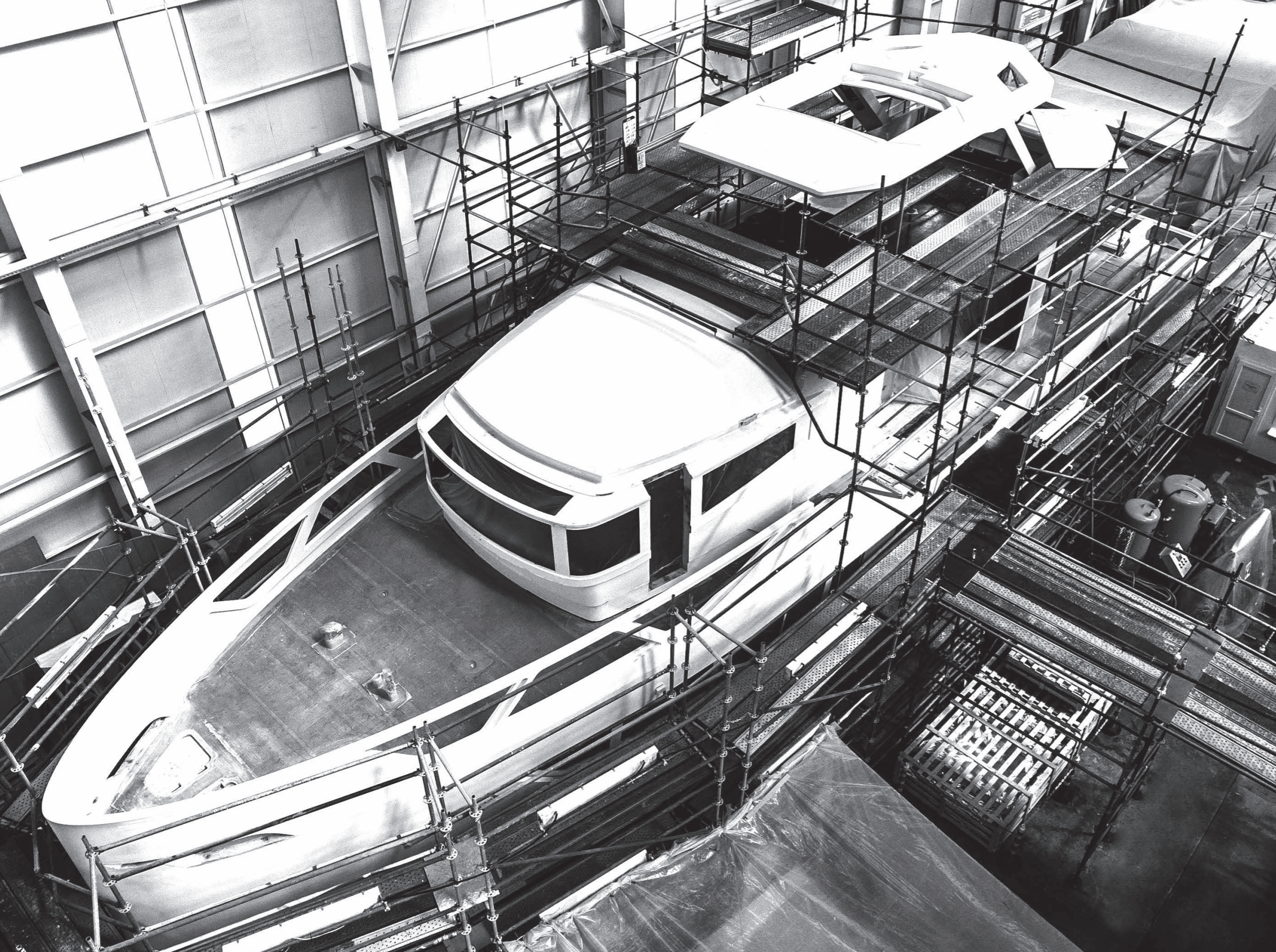


26 M

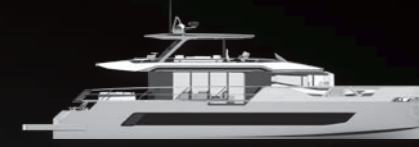
Interior Designer Artline Interiors | Exterior Designer Red Yacht Design | Naval Architecture Van Oossanen



XSR 85 Hybrid offers you the most environmentally friendly way to spend time on board with the parallel hybrid propulsion systems; the best alternative for the fossil fuels. The system will allow for more space in the accommodation areas than a yacht at the same length. Electric engines operate silently with no exhaust gas. You can make slow cruises by utilising electric propulsion with nearly zero cost! The maintenance period of electric engines is also longer than internal combustion engines. We provide you a maximum acceleration value regardless of propulsion revolution or the yacht's speed; an efficient and powerful cruise with the highest manoeuvrability.



XSR 85 HYBRID



26 M

Interior Designer Artline Interiors | Exterior Designer Red Yacht Design | Naval Architecture Van Oossanen



XSR 85 can accommodate 8 guests and 4 crews. Full-beam Owner Cabin on aft lower deck with his & her walk-in-closet and bathroom, port Guest Cabin with twin bed and bathroom, starboard Guest Cabin with double bed and bathroom, full-beam VIP Cabin on forward with walk-in-closet and bathroom, which is convertible to TV Lounge. The beauty of Nature, touchable surfaces, sustainable materials, clean technology, designed to embrace, pampering the eye. Elegance in simplicity, a safe bowery oasis, floating the sea. Reflecting the freedom of exploring the horizon. Watching a movie, playing a game, taking a nap, check your mails without losing the connection with the rest of the party, you can find your own cosy corner. In the evening the sofas transform into a spacious bed, hidden doors restore privacy and the Video beamer finds a new projection location. A walk-in closet and soft shaped bathroom complete the comfort. The sculptural staircase connects in one sweeping line all levels to a logical composition. Fluid lines scooping the daylight from the Sundeck into the heart of the ship. Aft of the lower deck is dedicated to the master cabin. All functional elements are arranged around a surprisingly fluid space. The absence of bulky furniture and space intruding TV screens, allows the carefully chosen material structures to shine and define.



NEW DESIGNS



A O U D A  63 M

Interior Designer: Hotlab | Exterior Designer: Hotlab



Aouda 63 combines pure luxury with superior technology. The exceptional strength and safety features, allow you the joy of long-distance cruising wherever you choose; A remote diving spot or a far-reaching family adventure. Aouda 63's strong, stylistic design and elegant proportions make this an experience like no other, where adventure and the enduring magic of connection are fused together for true explorers. The vertical bow, the bridge deck windshield tilt backwards, and the massive mast are to be considered the major contamination's taken from the explorer vessel' world. Even more comes from the extra features which this yacht may provide: an incredibly wide and fully usable Heli landing area for all those guest who cannot wait to be on-board, one "al-fresco" type of Gym area, in the bridge deck, and two beautiful swimming pools: one in the main deck aft and one just for the owner. The bar area and the additional lounge chairs-created by the transom door folding, provides the perfect environment at the water's edge for sunbathing, a swim in the ocean and a cocktail. Starting from the General Plan there are some elements which immediately recall its spirit: huge exterior space and quite different use of the interior decks. 3 full-beam big suites: two VIP Suite, one in the lower deck and one in the main deck, plus of course the Master Cabin, one more deck higher, with an incredible 180 view towards the sea. More than this three more Double / Twin Cabins: in the lower deck and two in the up-front main deck. This combination still leaves the crew an unreachable amount of space: 8 Crew Cabins, 1 Captain's Cabin, a 30sqm Galley, a 14 seating Crew Mess and of course a full deck dedicated to services, from Laundry to dry and Freeze Storage.

M S H A L E 56 M



S 5 0 0 52 M



Interior Designer TBD | Exterior Designer Unique Yacht Design

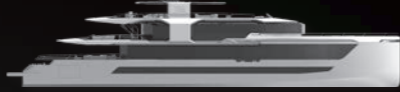


Interior Designer TBD | Exterior Designer Tim Saunders



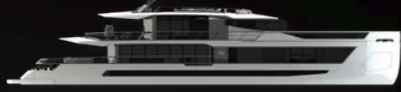
The arrows of the gods never miss their mark. Those of Apollo, Artemis and Eros were always supposed to strike the heart. Sarp Yachts new design Mshale 56 completely contains the characteristic of an arrow where her name come from, the intersection of wisdom, power and beauty. Stunning exterior styling combined with the spaciousness and simple elegance of the interior guarantee that Mshale 56 is attractive from all angles. Mshale 56mt can accommodate 12 guests and 15 crews. Full-beam Owner suite with huge lounge sofa corner, dressing room and bathroom, one twin guest cabin with bathroom, two double guest cabins with vanities and bathrooms, one double guest cabin with walk-in-closet and bathroom, one double guest cabin with bathroom. With steel hull and aluminium superstructure Mshale 56 is capable of undertaking her guests discovering across the world in great safety thanks to her seaworthy hull lines and well flared bow. Her stylish and detailed exterior design and lines, her spacious interior spaces reflect a new approach to yachting.

S500 is beyond the imagination by combining the high-end technology of material usage and engineering in consideration of luxury and aesthetics. Because of the revolutionary general arrangement design, Owners have one of the longest super yachts below 500 GT. S500 offers you brand new design criteria. With aggressive, classy and dynamic exterior styling, and balanced general arrangement, comfort and wide accommodations combined with quality and luxury, you will feel the soul of the sea. With high-end technology, strong seakeeping performance, every sea conditions will become your friend! S500 can accommodate 10 guests and 9 crews. Full-beam Owners suite with separate office, bathroom, dressing room and private terrace, two twin guest cabins with bathrooms, two double guest cabins with bathrooms. Every detail, including internal elevators easy transitions between the decks, private office, Jacuzzi and private balcony; S500 provides the maximum pleasure on board. Beach club becomes the most glamorous area after opening two hinged balconies.

X S R 1 5 5  46 M



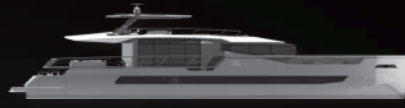
Main design feature of the yacht is the use of full-length glass more than others at this range. As in all XSR series, the main goal is to integrate enclosed spaces with more light and exteriors. Full glass living areas and spacious exteriors with loose furniture offer Owner the ultimate freedom and flexibility on board. Sophisticated styling lines and architectural use of windows give her the privilege among other superyachts below 500GT. She is a perfect harmony of spacious volume, comfort and silence with zero compromise from style. Unique superstructure windows of Upper Lounge provide better view and natural daylight which is the result of unusual approach to a distinctive exterior styling. Exterior lounge area with glass separation doors surprise on upper deck with integration to interior for some after-hours entertaining. Large staircase with its sculptural shape and a lift connect all four decks while allowing sunlight directly through lower deck Lobby. The Owner Suite is located at the fore deck with an office, dressing room and his-and-her bathrooms. Two balconies at each side; operated by Owner without the crew's assistance; provide Owner large recessed volume giving great lightness and visibility from inside-out.

X S R 1 2 5  38 M



The most unique aspects of XSR 125 is using of extensive glass integrated with the superstructure which gives the project the architectural touch. The idea behind XSR 125 is all about green technology, from design philosophy to the engineering details, we want to take the level to the highest quality with the use of current and future technology in every possible way. We wanted to achieve both green technology and stylish design at the same time without giving zero compromise from customers' luxury. Hull is developed with the patented 'Fast Displacement Hull Form' or FDHF. XSR 125 can accommodate 12 guests and 5 crews. Full-beam Owner Cabin on main deck forward with separate office, bathroom, dressing room. Two Double VIP Cabins with bathrooms and two Twin Guest Cabins with bathrooms on lower deck. A large VIP cabin on upper deck aft with separate bathroom and dressing areas. XSR 125 interior design aims to give guests a sense of openness full comfort. Full-glass living areas add further appeal to the airy interiors, both on the main and the upper decks.

XSR 105 32 M



SR 105 offers two options for propulsion system; conventional and parallel hybrid. XSR 85 hull and superstructure will be composite with carbon fibre reinforced, based on Sarp Yachts' long-standing experience. Thanks to her patented fast-displacement hull she offers maximum efficiency and manoeuvring. XSR 105 can accommodate 8 guests and 5 crews. Full-beam Owner Cabin on aft lower deck with bathroom, port and starboard guest cabins with twin beds and bathrooms, full-beam VIP cabin on forward with bathroom. Large walls of glass and glass doors blur the lines between indoors and out-of-doors and allow guests to feel connected to the sea, even when inside.

XSR PLUS 26 M



The outsized XSR 85 Plus offers two options for propulsion system; conventional and parallel hybrid. XSR 85 hull and superstructure will be composite with carbon fibre reinforced, based on Sarp Yachts' long-standing experience. Thanks to her patented fast-displacement hull, XSR 85 has 20 knot maximum speed with 2 X 800HP main engines and 1000NM range with 12 knot cruise speed due to her economic fuel consumption. XSR 85 Plus main goal is to integrate interior and exterior spaces giving great lightness and visibility from the inside-out and giving guests a unique open deck feeling. XSR 85 Plus has significant exterior areas at this range with 135 m² open space and a vast lounge area at the aft with sunbeds and a relaxing lounge. The generous aft Jacuzzi area is surrounded by large sunbeds for fun time while sunbathing. Dining area with 12 persons with bar maximizes the outdoor pleasure among family and friends. The Owner Suite is located at fore main deck with a private terrace and a balcony on the port side. The lower deck has four comfortable Guest Cabins: two double cabins and two twin cabins with the possibility of accommodating up to ten people. Two full-beam VIP cabins located at the fore and aft lower deck maximize the guests' comfort. The forward VIP Cabin also converts to a full-beam TV lounge. Crew Cabins are located at aft lower deck with private access out of sight. Natural daylight bathes the main salon as a result of the architectural design approach to the exterior styling. A comfortable and sculptural shaped staircase is serving all decks.

A T L A H U A



58 M

A L I N T A



40 M

Interior Designer: Donald Starkey | Exterior Designer: Tanju Kayayoglu



Interior Designer: Stephen Hush | Exterior Designer: Tanju Kayayoglu



Atlhua 58 classic styling feel, but much more organic marine animal inspired shapes dominate the design. Three fundamental principles are paramount: safety first, form to satisfy function and maximum use of space. Hull will be constructed of steel with extra safety built-in through dedicated watertight compartments for stabilizers and steering gear. Superstructure will be made by vacuum-bagged epoxy sandwich composite, saving on weight and improving stability. The main deck spacious Owner's Suite with his and her bathrooms incorporates fabulous automatically engineered port and starboard terraces providing fantastic open aspect vistas at anchor. It also combines a starboard side Office and a port side VIP Suite. These are adaptable and could become a private Owner's Gym in place of the VIP Suite or 2 suites when the forward or aft lower deck suites could be joined to become a large full-beam VIP Suite with lounge and bedroom to maintain 6 on board suites. All decks are accessible via a 2-person elevator also with wheel chair capability. There are 3 open vista levels of shaded aft open deck areas with a sun deck forward Jacuzzi tub and sunbed arrangement. The lower aft Beach Club provides a swim platform combined with dive facilities, sauna/steam room, gym and massage room with additional easy staircase access from the starboard main deck. The forward crew spaces accommodate 8 plus 4 Officers and Chief Engineer's Cabins with separate Crew and Officer's Mess.

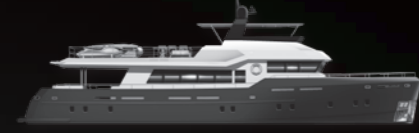
Wherever she goes, she draws the attention of salty sailors and connoisseurs of finer things in life, often owners of much bigger boats. The plumb and fine bow, canoe stern, raked mast, big cowls and classic windows with the balanced use of varnished timber all around define the character of this beauty. Hull is of shipbuilding steel with a round bilge and moulded skeg. Main deckhouse is planned to be light and stiff constructed of sandwich epoxy composite. There is a lot of hype about 'green boats'. The most 'green' parameter is a long waterline length because the vessel achieves her cruising speed easily with low power. On top of this, there are other items to increase efficiency bit by bit: fine lines, moderate displacement and beam conservatively and continuously rated modern diesels, high reduction ratio gearboxes turning large propellers running in deep clean water and well-designed appendages. Another exceptional design attribute is that upper deck is dedicated to the Owner Suite, dayroom library, protected exterior snug and open aft deck. Plus, crew need not enter any part of this deck for day to day operation of the yacht. Apart from the upper deck, layout is rather conventional with crew forward and guests amidships in the hull. Wheelhouse is raised on the main deck with superb visibility. Galley and Salon cover the rest of the deckhouse. Then there is a large aft deck which will be the hub of daily life; if open through the aft double doors, Salon will be a natural extension of the living space.

C O R A L L O



33 M

P H E M E



28 M

Interior Designer: TBD | Exterior Designer: Unique Yacht Design



Interior Designer: Sarp Yachts | Exterior Designer: Tanju Kalaycoglu



According to Homer's Odyssey, Poseidon lived in a palace made of coral and precious stones on the eaves of Mediterranean. Sarp Yachts has named its brand-new yacht that emphasizes the strength, power and the reflection of the beauty of corals. Corallo 33 elegant retro style combines with the high-end engineering of Sarp Yachts. Her lucent style of luxurious interior is provided by the experienced craftsmanship heritage. The abstract of the beauty of the sea. Corallo 33 can accommodate 10 guests and 5 crews. Full-beam Owners Suite with bathroom and walk-in-closet, one double full-beam VIP Cabin with bathroom and dressing room, two twin Guest Cabin with bathroom each, one double Guest Cabin with bathroom. Corallo 33 living spaces of crew and guests are separated functionally. The whole yacht is your playground, with an extensive Flybridge, an overhead lounge and beautiful main deck aft lounge.

Our hull has a long waterline and fine entry for better consumption and less pitching in a seaway. Weight distribution is controlled by design characteristics and using epoxy sandwich composite for the structure. Layout is arranged with owner and guests amidships and forward in the hull. Two Crew Cabins are placed aft to accommodate maximum four. Engine room is forward of crew in the hull with good volume and good accessibility. Thanks to trawler concept, Wheelhouse is well forward giving excellent visibility and more usable main deck length to living spaces. Aft deck is designed around a big gullet style seating which is very comfortable for sleeping, too. Here guests are protected from the burning rays of the Mediterranean or Caribbean sun, but they are well connected to the azure sea through the adjacent wide swim platform. Sunsets are best enjoyed on the flying bridge with wet bar and bar-b-q facilities.

PHILOMELA 40 M



Interior Designer: Stephen Hush | Exterior Designer: Tanju Kalayoglu

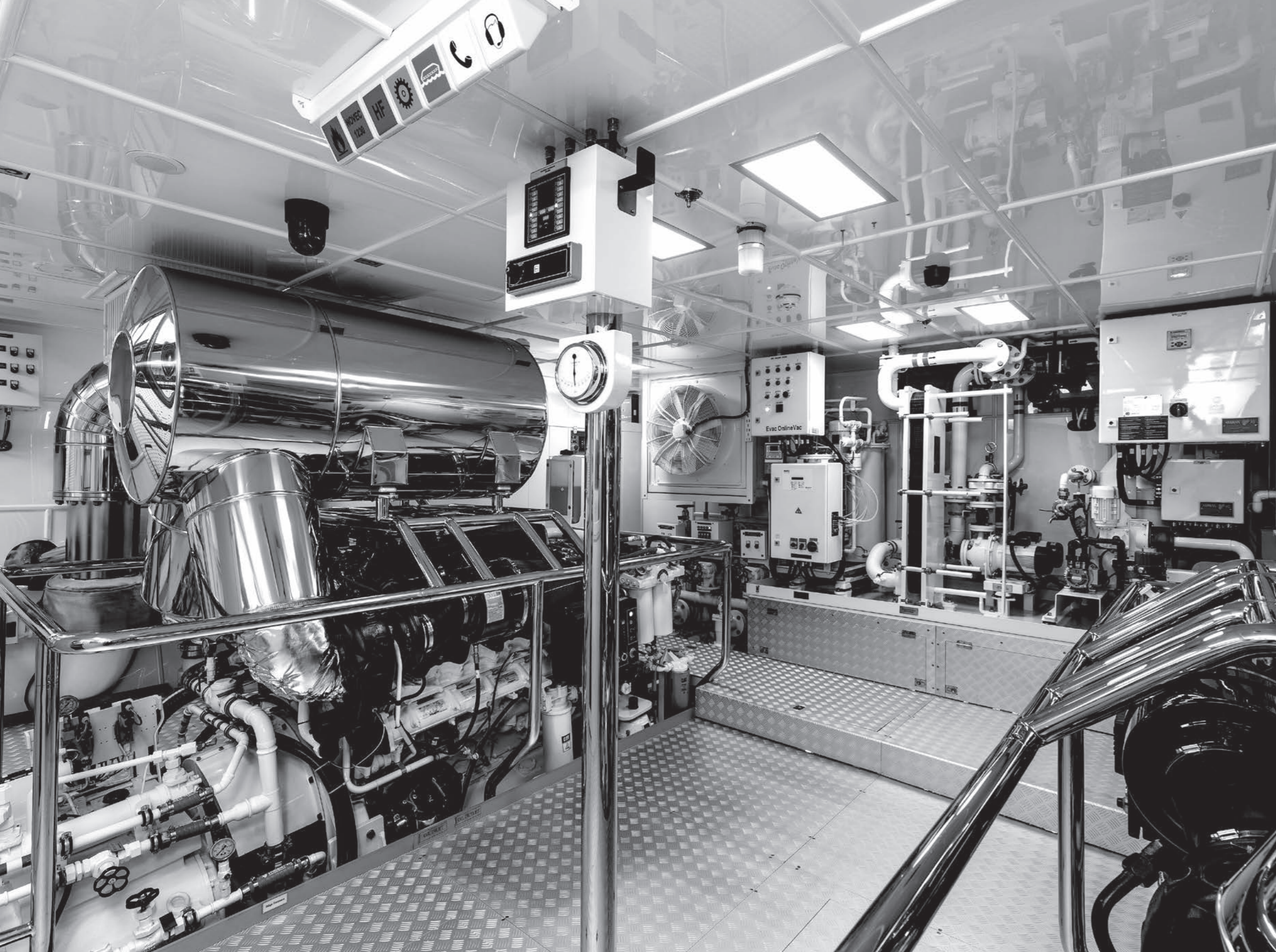
Hull form is moulded to be fast and seaworthy at all conditions. Fine entry with a little deeper sections forward will reduce slamming and slice through the chop. This boat will plane quiet early with a displacement length ratio of 105, but she has moderately wide stern lines to stay balanced at heeled conditions. Stability is boosted by a hydraulically operated very high tensile steel fin keel carrying a huge lead-antimony T bulb. Lucky owners and captains will be able to steer this agile creature only with the strength of their own muscles, no external power source required. A tall four spreader carbon mast with in-boom furling will produce the driving force. Access to the sea, a tender or to quayside is through a rotating under deck boarding ladder and a pasarelle as well as a hinging carbon bathing platform aft. Master Suite and three Guest Cabins located in the after part of the hull. A raised Salon having all round view is above the engine room with an office and navigation station tucked in. Forward part of the hull descending from the Salon houses another Dayroom, Galley, Laundry and nice sized Crew quarters. Every available volume is arranged for storage and access mainly to systems. Special features include a curved sofa with coffee table for relaxing and reading. There is also a feature desk design which doubles up as a dressing table, by pulling up a makeup mirror which is illuminated each side. This is a wonderful yacht and is designed to maximise the interior space and allows for plenty of natural light.

S O O N A 30 M



Interior Designer: TBD | Exterior Designer: Tanju Kalayoglu

Hull form is dominated by a long chine at about middle height of topsides. Inside volume and heeled stability is enhanced by this chine especially at aft part of hull. Two Crew Cabins are positioned in this flat portion aft of the Galley and third Guest Cabin. Raised Salon is the hub of all traffic on board with access to all compartments. Forward of Salon down three stairs are two Guest Cabins. Further forward of this is positioned the Master Suite. All cabins are unsuited with separate shower stalls. On deck forward of mast is completely flush with the exception of 120 mm high bulwarks running the length of the vessel. Anchor system is also hidden under a flush hatch, deployed by utilizing a folding arm. A mixture of hydraulic winches and captive winches enable this exciting yacht to be versatile in mega yacht racing or three-crew passage making. Rig will be a tall, three swept-back spreader, carbon spar with nitronic rods. Keel system is telescopic which consumes less space in the hull, but still lowering a huge bulb down to 4.6 m from 3 m.



QUALITY POLICIES



Sarp Yachts undertakes to employ adequate Technologies which have less impact on the environment in terms of global pollution during its design and production processes with an understanding of sustainable development.

Sarp Yachts complies with all the applicable regulations on health and safety. We apply the most suitable solutions based on our knowhow and experience in shipyard management by assessing risks notwithstanding coverage under the applicable regulations. We organise the necessary training activities to ensure that our Occupational Health and Safety Management Systems is adopted and applied by our employees, subcontractors and contractors, and to create individual and social awareness on health and safety among all. Our primary responsibility is to protect occupational health and safety of the employees in all our activities. We believe that all accidents and occupational illnesses may be prevented, and in this context, we adopt "zero accident and occupational illness" as our sole target.



"We believe our clients are not just buying a yacht. They are also buying time. Uninterrupted time away from the demands of life. We ensure our yachts are built to the highest standard to ensure time spent onboard delivers the ultimate enjoyment and creates stories to share."

Emre Sandan
Shipyards Manager

THE QUALITY LIFE DESERVES



Antalya Serbest Bölgesi 4 Sokak No:9 Konyaaltı - Antalya, Turkey
T+90 242 259 45 52 | info@saryachts.com | saryachts.com

