

# PROJECT NACRE



## 2025 SARP YACHT Nacre 62

<b>LOA:</b>	203' 5" (62m)	<b>Build/Model Year:</b>	2025 / 2025
<b>Beam:</b>	35' 10" (10.9m)	<b>Builder:</b>	SARP YACHT
<b>Max Draft:</b>	11' 2" (3.4m)	<b>Type:</b>	Motor Yacht Mega Yacht
<b>Speed:</b>	Cruising 12 Knots Max 17 Knots	<b>Price:</b>	(\$54,965,382 USD est.) €52,000,000 EUR
<b>VAT Paid:</b>		<b>Location:</b>	Antalya, Turkey

**NOT AVAILABLE FOR SALE TO U.S RESIDENTS WHILE IN U.S. WATERS.**

### Additional Specifications For PROJECT NACRE:

<b>LOA:</b>	203' 5" (62m)	<b>Delivery/Model</b>	2025
<b>Beam:</b>	35' 10" (10.9m)	<b>Year:</b>	
<b>Max Draft:</b>	11' 2" (3.4m)	<b>Year Built:</b>	2025
<b>Hull Material:</b>	Steel	<b>Builder:</b>	SARP YACHT
<b>Superstructure:</b>	Aluminum	<b>Model:</b>	Nacre 62
<b>Hull Config:</b>	Fast Displacement Hull	<b>Type:</b>	Motor Yacht Mega Yacht
<b>Hull Designer:</b>	Van Oossanen Naval Architects	<b>Top:</b>	Enclosed P.H. W/Sundeck
<b>Deck Material:</b>	Teak over Aluminum	<b>Engines:</b>	Twin, Diesel, CAT, 3512C 1500kW @1600rpm C Rating,
<b>Tonnage:</b>	1,150	<b>Staterooms:</b>	6
<b>Range At Cruise Speed:</b>	6500	<b>Sleeps:</b>	14
<b>Range At Max Speed:</b>	3200	<b>Heads:</b>	9
<b>Speed:</b>	Cruising 12 Knots Max 17 Knots	<b>Crew Quarters:</b>	8
<b>Int Designer:</b>	TBD	<b>Crew Berths:</b>	13
<b>Ext Designer:</b>	Hot Lab	<b>Captain Cabin:</b>	Yes
<b>Fuel Capacity:</b>	126160 L (33327.95 Gal)	<b>Classifications:</b>	American Bureau of Shipping LY3 AMS Maltese Cross 100-A1.1 "y"
<b>Water Capacity:</b>	26430 L (6982.07 Gal)	<b>MCA:</b>	Yes
<b>Location:</b>	Antalya, Turkey	<b>ISM:</b>	Yes
<b>Price:</b>	(\$54,965,382 USD est.) €52,000,000 EUR		

## **OVERVIEW**

The SARP Yachts 62m new build 'PROJECT NACRE' can be completed in 24-26 months time and features a fast displacement steel hull designed by Van Oossanen Naval Architects out of Holland with exterior styling by Milan based Hot Lab design studio.

She is a large volume 62 meter with a gross tonnage of 1,150GRT with one of the most impressive design elements being the elongated exterior deck spaces and her ground breaking hull design. The streamline design gives her an aggressive fluid feel and with an impressive range of 6,500nm she not only looks gorgeous but is a true global cruiser.

Regarding the Fast Displacement Hull by Van Oossanen, this is a revolutionary design that has been featured on notable yachts like Heesen Galactica Star. The design allows for slender, sharp waterlines but it also allows for the same interior as a traditional hull form yet with increased performance & fuel efficiency. Van Oossanen is credited with the creation of one of the most efficient pieces of engineering the industry has seen in recent decades and SARP is proud to have him play a major role in the design of PROJECT NACRE 62.

Combine the exterior design of well respected Hot Lab and you have a truly inspirational project that is waiting to be customized and delivered in a relatively short time line.

## **NACRE 62**

### **True Quality**

Easy words to say, but few stand in their own truth when they speak them, because true quality is demanding. It calls for the purest principles, the deepest commitments and only the truly dedicated will ever measure up.

But it's worth the search if you can find the road. There are subtle landmarks along the way and a discovery that drives you forward, and when you find true quality, it'll stop you in your tracks.

A supremely crafted superyacht is an unforgettable discovery, and it also tells a story. A story of absolute precision, trusted engineering, the finest materials and beautiful spaces, designed to be shared. Ultimately it's a story of those who built the yacht and their deep seated passion and determination to craft perfection.

When this comes to life in an exceptional superyacht, you can be sure you've uncovered true quality. Yours, to enjoy and a story to continue.

At Sarp Yachts we take the long road to quality investing the time, refining the detail, gathering the best around us and expecting the best of ourselves.

We believe when you craft things of beauty to create experiences to last, there's no other way to achieve it.

Our expert, in-house team ensured we achieved three certificates of Quality Evaluations from the American Bureau of Shipping We make sure the company we keep is both talented and respected, working with industry experts.

Our philosophy and attitude underpin the way we work with deep-seated passion and determination to craft perfection.

Sarp Yachts, The Quality Life Deserves.

"We believe our clients are not just buying a yacht. They are also buying time. Uninterrupted time away from the demands of life. We ensure our yachts are built to the highest standard to ensure time spent onboard delivers the ultimate enjoyment and creates stores to share."

## **Our Family Foundation Keeps It Personal**

Sarp Yachts is proudly owned by the Kanatli family. The family also owns the ETI Group Companies making Eti and Sarp Group Companies two of the most influential and innovative entities in Turkey. Together, they lead the way in a spectrum of business categories including aeronautics, logistics, insurance, food and marine industry, with more than 10,000 employees. They are significant organisations, but collaboration with partners and clients is the key to the way we work – we will always keep it personal.

## **State of the Art Shipyard**

Sarp Yachts has founded one of the largest (10,000 m<sup>2</sup>) and most modern facilities in the Free Zone of Antalya in South Turkey. It's specifically designed for the new construction and refit of luxury motor and sailing yachts up to 70m in length.

## **A Precious Pearl of the Sea**

Nacre forms the heart of a pearl's beauty. It is the beautiful crystalline shine that gives pearls their lustre, the iridescence that has beguiled mankind for generations. Sarp Yachts has named its next generation yacht after this highly prized, strong and resilient treasure.

Nacre 62 is a sleek, luminous yacht with every luxury imaginable. Its technological superiority is matched by the beauty of its hand-worked craftsmanship, including exquisite inlays of lustrous nacre throughout the interior.

Layers of elegant opulence to create your own pearl of the sea.

## **Exterior Design**

Long range 6,500 nautical miles at cruising speed of 12 knots. Silence and comfort at maximum speed of 17 knots.

Nacre 62m can accommodate 12 guests in six cabins, including a vast full beam Owners Suite on the main deck with private office, his & her walk-in closets. There are three alternative options for VIP Cabins and Guest Cabins on Lower Deck.

Nacre 62m is ideal for families looking for a luxury vacation. Her extensive exterior areas and extended swim platform offer unparalleled means of enjoying her cruising grounds. Beach Club with self-bar, dayhead, service areas and lounge sofas provides the perfect environment for the guests. The side folding hatches enlarges the area at maximum space and guests can have the water-edge feeling for a swim and a cocktail.

Maindeck aft is outfitted for socializing; a glorious space for viewing the horizon or enjoying the company of friends and family.

As part of sundeck, a dedicated bar and seating area with generously sized is the perfect spot for some after-hours entertaining, whilst the pool attached on the sundeck is fantastic for some midday refreshment. Pop-up elevator serving from Accommodation Deck to Sundeck for guests' comfort. The whole yacht is magnificent playground, with two pools. and distinctive exterior styling with huge sitting areas and sunbeds.

## **Specifications**

"It's a long road that leads to true perfection. Short cuts and detours have no place on this journey, and that's why we take the time and honor the craftsmanship, to create something this exceptional." Emre Sandan, Shipyard Manager



Nacre 60m Motor Yacht

Hull Type: Twin Propeller, Round Bilge Displacement

Exterior Design: Hot Lab

Interior Design: TBD

Naval Architect: Van Oossanen

Engineering: Van Oossanen

Classification: ABS A1 Commercial Yachting Service, AMS,RW for Unrestricted Service

Flag: Cayman Islands MCA LY3> 500 GT

Hull: Steel (Grade A = St 42)

Superstructure: Aluminum

### **Dimensions/Technical Details**

Length over all: 62.00 meters

Maximum Breadth: 10.90 meters

Moulded Breadth: 10.60 meters

Draught (dwl): 3.40 meters

Displacement(dwl): 880 tons (approx.)

Gross Tonnage: 1.000

Maximum speed: 17 knots

Range: 6.500Nm at 12 knots (cruising speed)

Fuel capacity: 126.000 liters

Fresh water: 26.400 liters

### **Propulsion Details**

Main engines: 2 x CAT 3512C 1500 kW @1600RPM

Propellers: 5-blade propellers, NI-Al-bronze

Main generators: 2x 200 ekW CAT C9.3

Bowthruster: 1 x ZF TT 2000 - 180kW

Stabilizers: Zero Speed TM roll stabilizer system, Quantum, Naiad

## **SPECIFICATIONS**

### **GENERAL**

YARD NO	NB102
TYPE	Fast Displacement Hull Form
BUILDER	Sarp Yachts
NAVAL ARCHITECT	Van Oossanen Naval Architect, Netherlands
EXTERIOR STYLIST	HotLab Yacht Design, Italy
INTERIOR DESIGNER	TBD
ENGINEERING	Van Oossanen Naval Architect, Netherlands
DELIVERY	26 months after signing the contract
CONSTRUCTION	Steel Hull (Grade A = St 42), Aluminum Superstructure
CLASSIFICATION	ABS A1 Commercial Yachting Service AMS - MCA Code LY3 MCA (Cayman Island Shipping Registry)

### **HULL**

Length Overall	62.00m
Moulded Beam	10.60m
Maximum Beam	10.90m
Depth Centreline	5.87m
Draught (SLL)	3.40m
Draught (DWL)	3.06m
Waterline Length (SLL)	54,97m
Waterline Length (DWL)	54,77m
Displacement (SLL)	1043 tonnes
Displacement (DWL)	880 tonnes

### **TONNAGE**

Gross Tonnage	1150 GT
Net Tonnage	300.5 tonnes
Displacement, design	885 tonnes

### **SPEEDS**

Max. speed (@50% load draft)	17 knots
Cruising speed	12 knots

## RANGE

6500 N. Miles approx. @cruising  
speed

## TANK CAPACITIES (approx.)

Fuel Tank	126.160 liters
Lub Oil Tank	2.240 liters
Grey & Black Water	16.200 liters
Sewage Tank	2.480 liters
Sludge Tank	2.480 liters
Hi-Fog Water Tank	11.180 liters
Fresh Water Tank	26.430 liters
Dirty Lub Oil Tank	2.240 liters
Treated Water Tank	2.240 liters
Bilge Tank	3.000 liters
Urea Tank	7.560 liters

## EQUIPMENT

Main Engines	CAT	2x 3512C 1500kW @1600rpm C Rating
Gear Boxes	ZF	2x 7640 (4:1) Reverse Reduction, or equivalent
Shafts & Propellers	TEIGNBRIDGE	2x (approx.)1800mm diameter, 5-bladed in NiBrAl, or equivalent
Generators	CAT	2x 185 kW, or equivalent
	CAT	1x 110 kW, or equivalent
Electricity		3-phase, 4-wire and PE system, grounded neutral 230V / 400V, 50 Hz
Batteries	MASTERVOLT	or equivalent
Steering System	DATA	or equivalent
Bow Thruster	ZF	1x 180 Kw, or equivalent
Stabilizers	NAIAD	1x Model 820, or equivalent
Fuel Separator	ALFA LAVAL	or equivalent
Oil/Water Separator	RWO	or equivalent
Fire/Bilge Pumps	AZCUE	Electric Fire & Bilge Pumps, or equivalent

Watermaker	IDROMAR	2x or equivalent
Water Heaters	DIKO	2x or equivalent
Fresh Water Pumps	WILO	2x or equivalent
Sewage Treatment	HAMANN	or equivalent
WC System	EVAC	Vacuum Toilet System or equivalent
Air Conditioning	DOMETIC	(approx.)600,000 BTU w/Fresh Air Make-Up Unit, or equivalent HeinenHopman Engine Room Active Cooling System, or equivalent
Anchor Windlasses	DATA	2x or equivalent
Stern Capstans	DATA	2x or equivalent
Anchors and Chain	MANSON	2x 450kg SHHP Galvanised Steel; or equivalent Studlink Galvanized Chains
Tender Crane	HYDROMAR	1x Tender crane installed overhead in beach club, max. 2500 kg SWL, or equivalent
Rescue Crane	HYDROMAR	1x Certified rescue crane installed on forward deck, max. 1500 kg SWL, or equivalent
Pasarelle	HYDROMAR	1x Fully retractable hydraulic gangway, approx.7 m, max 200kg SWL, or equivalent
Boarding Ladder	HYDROMAR	1x Hydraulic operated side ladder approx.2,7 m ser. height, max. 150kg SWL, or equivalent
Telescopic Mast	HYDROMAR	1x Hydraulic operated telescopic mast located at foredeck, or equivalent
Pools	CUSTOM	2x in-house production
Mooring Bitts, Fairleads	CUSTOM	Stainless Steel 316L polished
Stanchions & Railings	CUSTOM	Stainless Steel 316L polished
Ship's Bell	CUSTOM	Stainless Steel with engraving of ship's name and year, polished
Bimini Awning (optional)	MAKEFAST	1x Electrically Operated Sunroof
Wheathertight Doors	NEWTHEX	or equivalent
Watertight Doors	BOFOR	or equivalent
Hatches	BOFOR	or equivalent
Beach Club Door Port	NEWTHEX	1x Port watertight aluminium door opening upwards, or equivalent
Beach Club Door Stbd	NEWTHEX	1x Stbd. watertight aluminium door opening downwards, or equivalent
Transom Door Aft	NEWTHEX	1x Aft watertight aluminium door opening upwards, or equivalent
Owners Balcony	NEWTHEX	1x Stbd. weathertight aluminium door opening downwards, or equivalent

#### TENDERS & WATERSPORTS EQUIPMENT (OWNERS SUPPLY)

All leisure equipment is to be supplied by the Owner with respect to the design conditions. The Builder will approve the type and dimensions of the subject equipment due to the capacity of the cranes and reserves area dimensions. The Builder is to provide cradles for the subject equipment.

## **FIRE & SAFETY**

### **SAFETY**

SOLAS 2x A Pack Liferaft 16 person + 1x A Pack Liferaft 10 person for each side, or equivalent

CASTOLDI Rescue Boat Jet Tender 14RB / SOLAS, or equivalent  
Safety equipment according to Classification and Flag State

### **FIRE FIGHTING**

MARIOFF Pressured Watermist System for accommodation and technical areas, or equivalent  
Portable fire extinguishers located throughout in accommodation  
Firefighting equipment according to Classification and Flag State  
Customized Engine Alarm Monitoring System

### **ALARMS**

CONSILIUM Fire Detection & Alarm System, or equivalent  
General Alarm System  
Internal Doors & Escape Hatches Alarm System

## **ACCOMMODATION**

The yacht has five decks; Bottom Deck, Lower Deck, Main Deck, Upper Deck and Sun Deck. The Yacht is designed and outfitted to accommodate 12 guests and 13 crew; with a total of 25 persons.

Cabin: Full-beam Owners' Suite with walk-in closets, his & her bathrooms and private office. There are three alternative options for VIP Cabins and Guest Cabins on Lower Deck.

First option is four VIP Cabins with bathroom including Gym and Spa. Second option is two full-beam VIP Cabins and two twin Guest Cabins each with bathroom. Third option is four VIP cabin and a single cabin (for nanny) each with bathroom including Toy Store.

### **BOTTOM DECK**

Laundry, Cold Room, Technical Spaces, and Storages.

### **LOWER DECK**

Engine Room, Beach Club with lounge sofas, Steam Room, Dressing, Shower and Day head. 4 double VIP Cabins with walk-in-closets, vanity desk, and bathrooms with separated shower and toilet areas. 5 twin Crew Bunk Cabins with bathrooms, separate Officer Cabin and Engineer Cabin with bathrooms. Crew Mess and Storage. A dedicated GYM area and SPA are located at the Accommodation Deck for guests. There are three layout options for Guest Accommodation at the Lower Deck.

#### **MAIN DECK**

Sunbeds, lounge chairs and bar on the aft deck. Main salon with large sofas, coffee tables located at aft. Day head, Pantry and Galley. Formal Dining Lounge for 12 people. Owners Suite with a private office, separate his & her bathrooms, walk in closets, vanity table, lounge sofas and private balcony. One double VIP Cabin with bathroom.

#### **UPPER DECK**

Dining table for 14 persons and lounge sofas located on the aft deck. Upper Lounge/Cinema located at the aft with sofas, bar and play card table. Day head and Pantry with storage and technical areas. Wheelhouse located on forward with officer desk and back sofa. Captain Cabin with bathroom and Officers Lounge. Rectangular Pool on the foredeck with lounge sunbeds and lounge sofas. Rescue boat to be stored on foredeck.

#### **SUN DECK**

Rectangular pool with sunbeds located forward. Fully equipped Wet bar with bar stools and large lounge sofas on the aft. Pop-up elevator serving from Accommodation Deck to Sundeck for guests' comfort.

#### **OPTIONS**

Optional items and systems listed below have to be examined and reviewed upon applicability on the engineering side. Builder will make essential cost and technical analysis. According to the final design and engineering's done by Exterior & Interior Designer and Naval Architect; some options would be found inapplicable.

HULL VANE®

MTU 12V4000 M65R

LLOYD REGISTER "COMFORT CLASS" REGULATION

ENGINE ROOM AIR COOLING SYSTEM

NIGHT GENERATOR

STERN THRUSTER

AUTOMATIC SLIDING DOORS OTHER THAN MENTIONED IN THE SPECIFICATION.

FUEL STRIPING SYSTEM

CENTRAL VACUUM CLEANING SYSTEM

GLASS ELEVATOR

GLASS BRIDGE PANELS FOR WHEELHOUSE AND WING STATIONS

WASTE MANAGEMENT SYSTEM

HELIDECK; NON-CERTIFICATED, TOUCH & GO

LOADING HATCH FOR CREW AT LOWER DECK

ANCHOR OBSERVATIONS HATCHES FOR PORT & STARBOARD



HIGH-GLOSS VENEER FINISHES FOR INTERIOR  
METALLIC TOP COAT PAINTING  
MULTIFUNCTIONAL TRANSFORMER® OPACMARE FOR SWIMMING PLATFORM  
ELECTRIC PEDESTALS FOR EXTERIOR TABLES  
AUTOMATICS WHEELHOUSE HELM SEATS  
AIR SPA SYSTEM FOR POOLS  
BOAT BOOMS SYSTEM TO ATTACH TENDER ON THE YACHT  
FLIR THERMAL PTZ CONTROLLABLE CAMERA  
IT/WI-FI MANAGEMENT SYSTEM  
LIGHTING, AC AND AUTOMATIC CURTAINS CONTROLS FROM ENTERTAINMENT SYSTEM  
VIDEO DEMAND  
IRONING MANGLE IN LAUNDRY

#### **CURRENT PRODUCTION STATUS**

Steel hull ABS approval has been completed. A letter/document regarding delivery has been obtained from the classification society. The aluminum superstructure has been delivered to ABS and approved. Steel hull sandblasting process has been done. The planned hull-superstructure joint operation has been completed.

































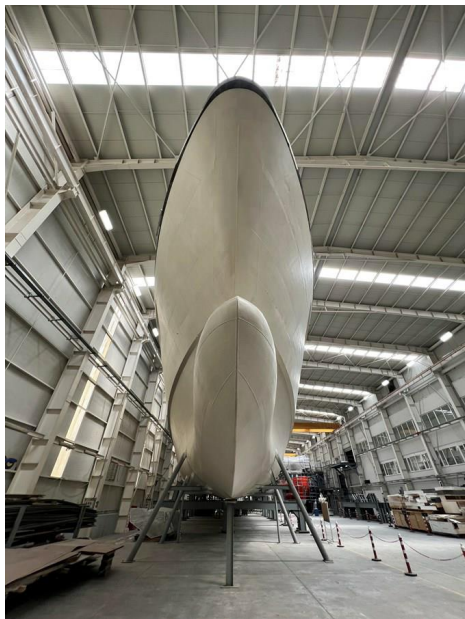


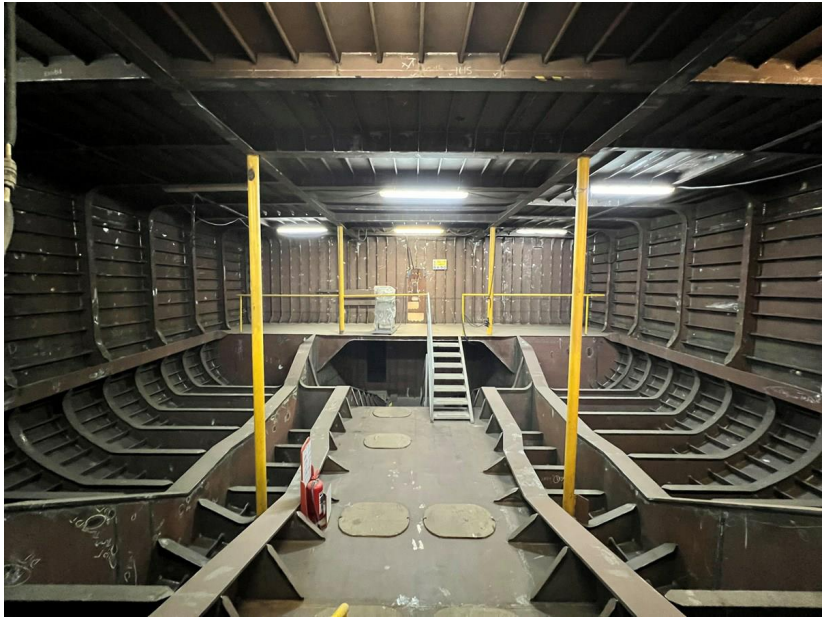
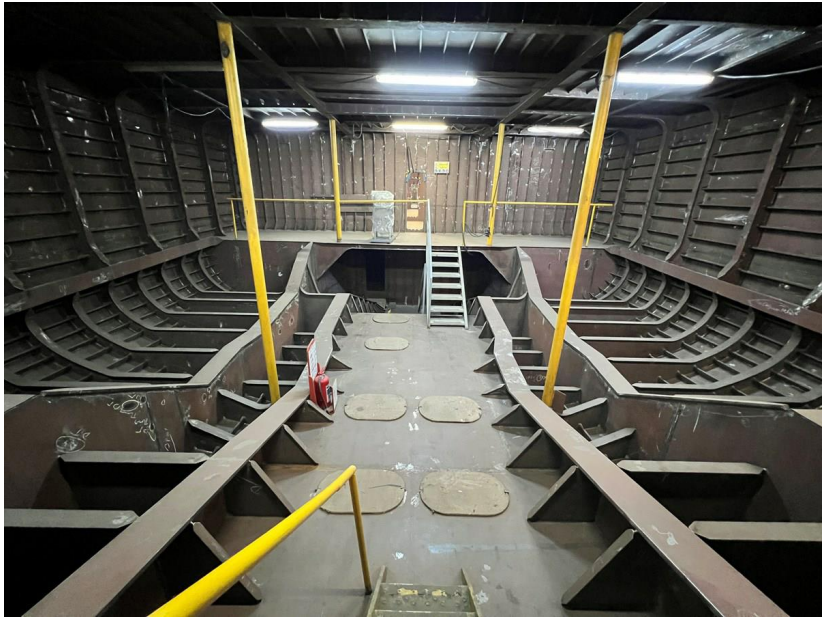




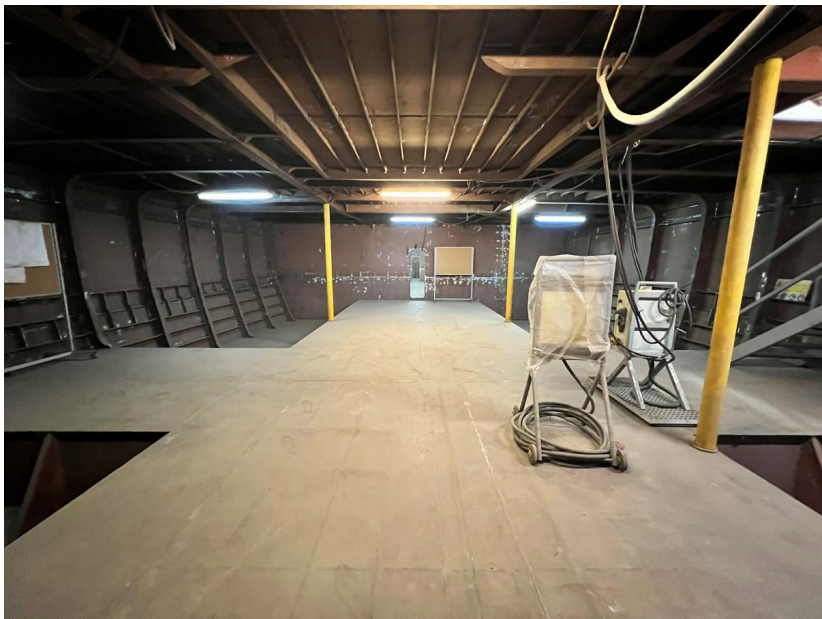
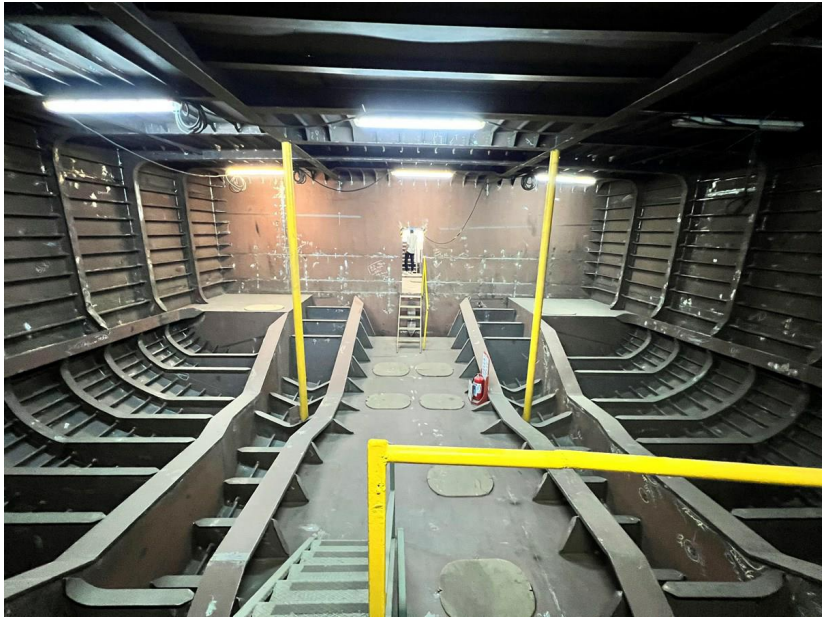




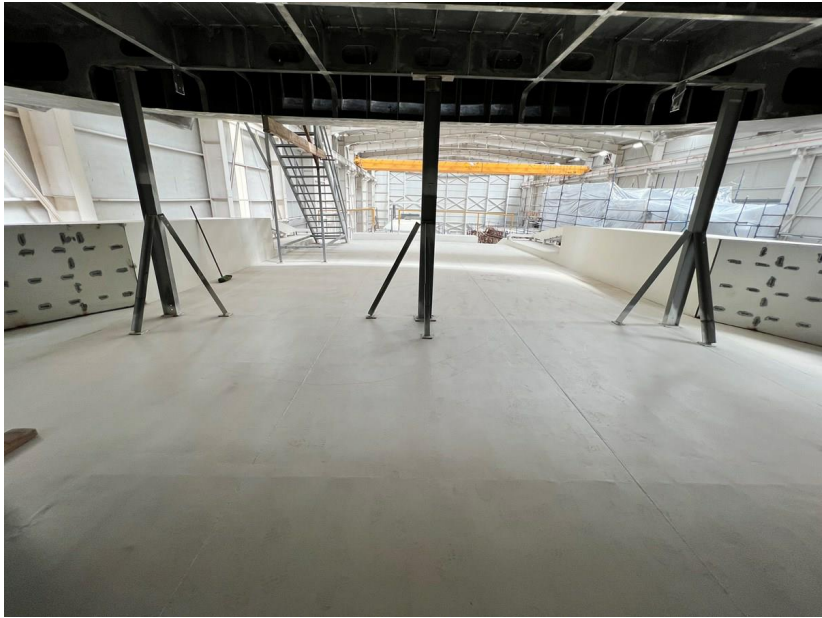


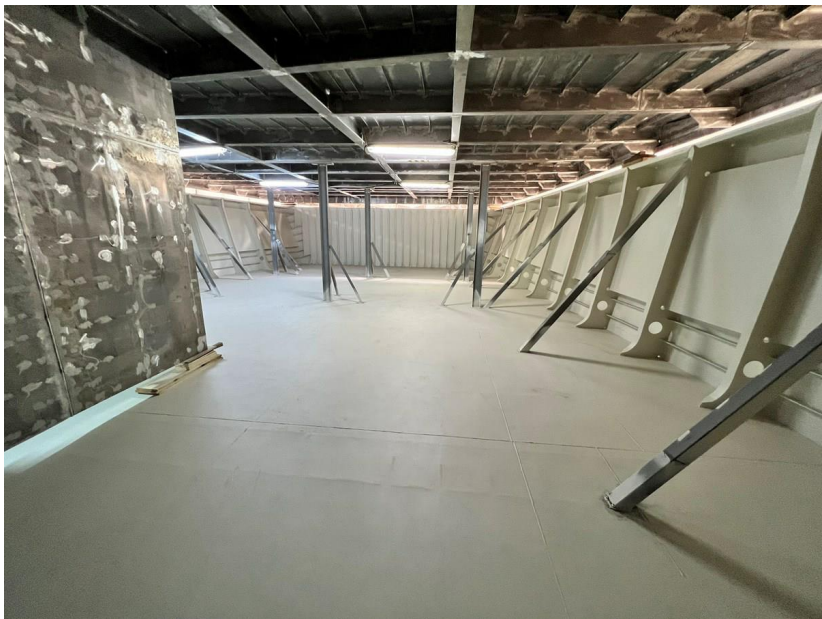


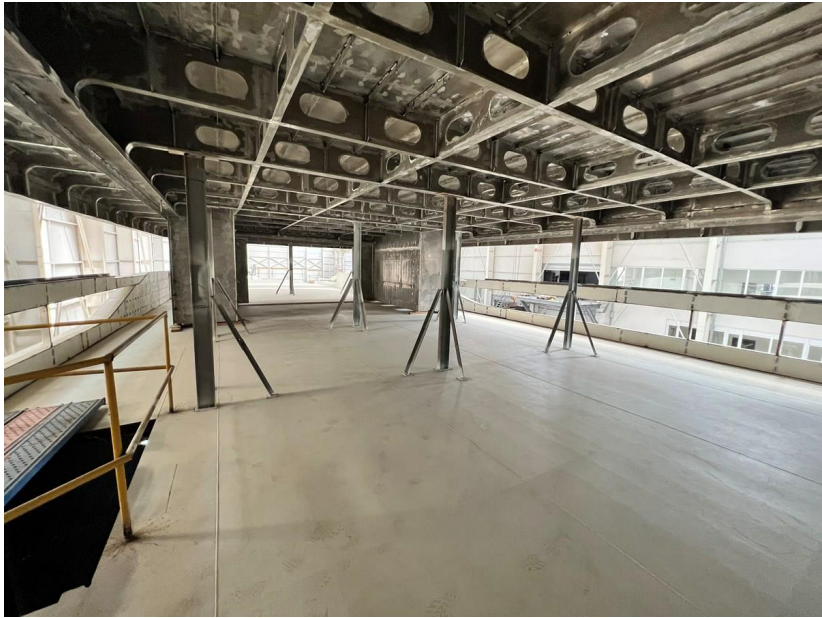




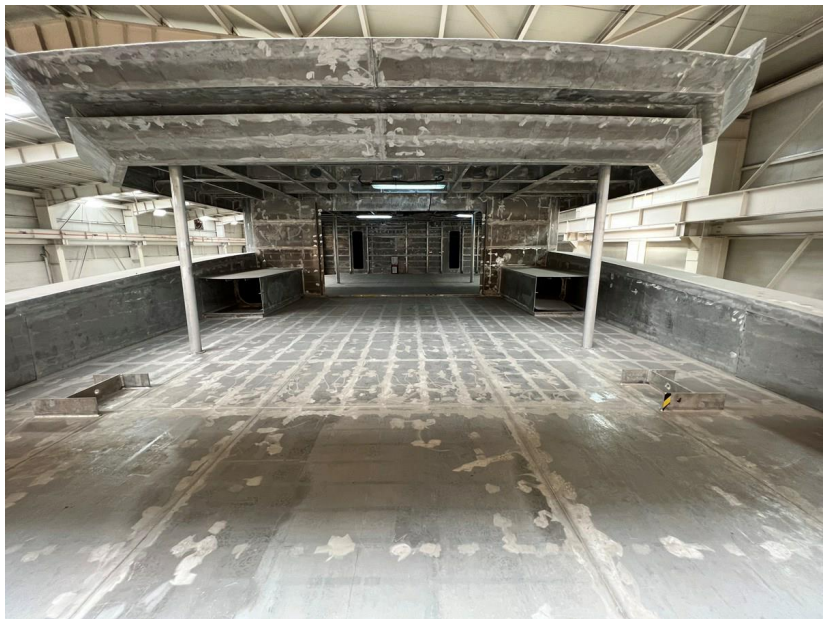
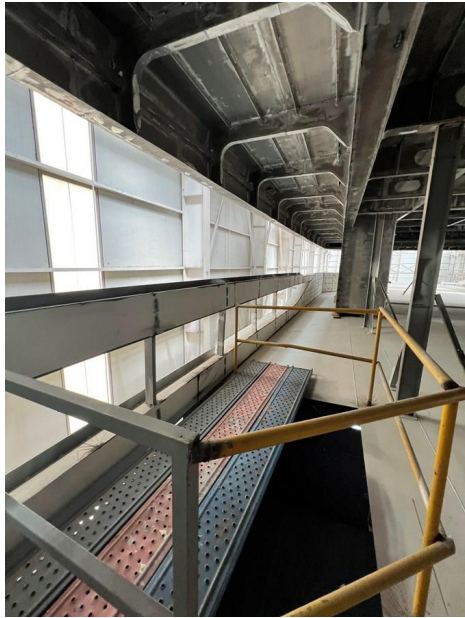




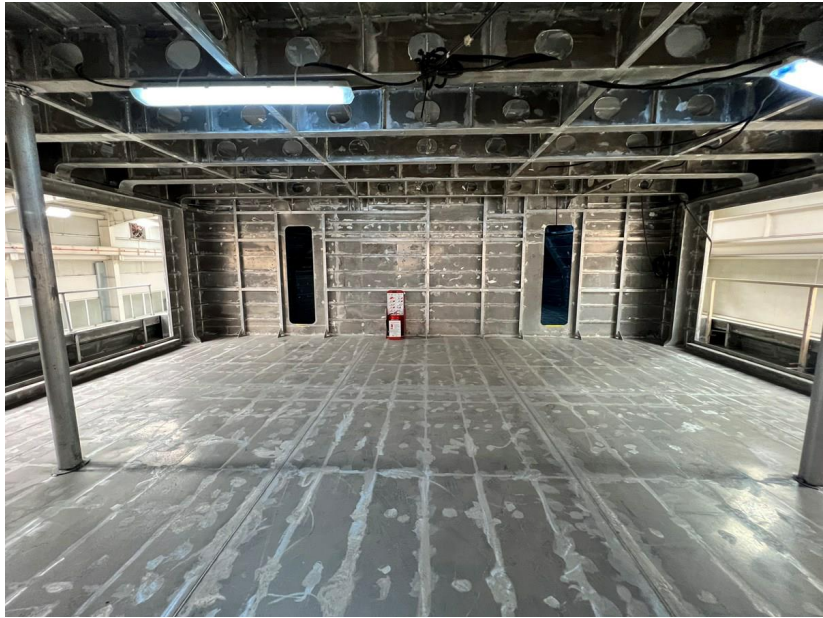
























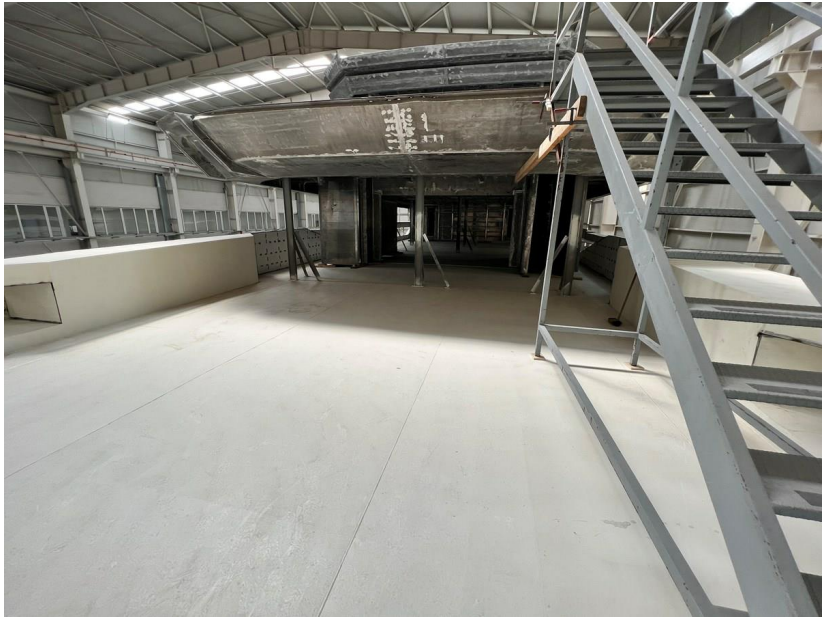












# NACRE 62 GA PAINTED

