



CANTIERE
DELLE
MARCHE

beyond yachting experience

ACALA



DARWIN
CLASS 102'

M/Y Acala

YACHT INTRODUCTION

M/Y Acala is a 102 ft steel and aluminum Explorer vessel, part of the fortunate Darwin Class series that counts nowadays 12 units already sold.

Her beam of 7,43 mt (24 feet) and displacement hull account for the humongous volume of 244 GT, much more than vessels of similar size.

Built for a very experienced seaman, who has owned yachts from all the best northern European shipyards among which Amels, Lürseen, Feadship and passionate for diving, M/Y Acala features several customizations: a 2 tons crane can launch 6+ mt tender, air-conditioned outdoor areas and a diving center in the lazarette with Nitrox compressor, tanks holder and proper lockers for all the diving gear.

The five guest cabins are located on lower deck, with the Owner cabin forward, two VIP cabins aft and two guests amidships. In here, two bunk beds take the total number of guests aboard to 12. They can count on a crew of up to 7 accommodated in 4 cabins: captain cabin behind the wheelhouse and the rest on main deck forward.

Along with the diving center, guests can enjoy their time at sea in the fully equipped outdoor areas: dining on main deck cockpit and upper deck cockpit, sunbathing on foredeck, chilling on sun deck. In here they can take advantage of a pool, bar and plenty of lounge space.

The interiors are designed by the Archistar Simon Hamui, able to give an Explorer twist to salons and cabins thanks to a wise blend of liquidambar timber (also called sweetgum), hand-stitched leathers drawers and cabinets resembling vintage Louis Vuitton travel bags, antique brass Waterworks faucets and an elegant choice of free-standing furniture.

The technical standards that have made CdM a benchmark in its sector have been maintained: 12mm steel hull, cupronickel piping, independent rudders, automatic generator parallel, electric fins stabilizers, as well as wastewater treatment systems for black, gray, and bilge waters that have been adapted from the world of work ships and designed to be used 24/365.

M/Y Acala is powered with two 500 kW CAT C-18 engines, guaranteeing a top speed of 13 knots and a range of 4.500 nm at 10 knots of speed.



scan the QR code to watch
M/Y Acala in Fort Lauderdale



scan the QR code to watch M/Y
Acala surrounded by tiger sharks

YACHT STATUS & PRICE

AVAILABILITY

May 2019

PRICE

€ 8.100.000

VAT STATUS

Not Paid

YEAR

2015

MAIN ENGINE HOURS

2415

DIESEL GENERATORS HOURS

Port 5.882

Starboard 5.840

CLASS RENEWAL

October 2020

LOCATION

La Paz
(Mexico)



TECHNICAL SPECIFICATION

GENERAL FEATURES

Model
Darwin Class 102

Hull Type
Full displacement

Hull Material
Steel

Superstructure Material
Aluminum

Classification
RINA Pleasure

Flag
Cayman Islands

Port of Registry
George Town

DIMENSIONS

LOA
31 mt / 102 ft

LWL
28 mt / 92 ft

Beam
7.43 mt / 24.3 ft

Draught
Full load under the keel 2.45 mt / 8.84 ft
Full load under the skeg 2.86 / 9.38 ft

Displacement at full load
240 t / 264 US ton

Gross Tonnage
244 GT

SPEED

Maximum
13 kn

Cruise
10 kn

Range @ cruise speed
4500 nm

ACCOMMODATION

Cabins
5

Guests
12

Crew
7 in 4 cabins

CAPACITIES

Fuel
40.000 lt / 10 600 US gl

Fresh water
6.000 lt / 1 585 US gl

Black water
1.100 lt / 290 US gl

Grey water
2.100 lt / 550 US gl

Dirty oil
300 lt / 80 gl

Bilge
1.100 lt / 290 US gl

MECHANICAL EQUIPMENT

Engines
CaterpillarR C18 ACERT 2x 500kW
(680 CV) @ 1800 RPM

Engine hours
2.415

Water Maker
Idromar, 7200l/day

Stabilizers
CMC, electrical (zero speed and underway)

Bow Thruster
Electric, 52 kW

Black Water Treatment
Selmar

Fuel Separator
Alfa Laval

Toilet System
Tecma

Boiler
2 x 300 l (2 x 80 US Gallons)

Air conditioning
Condaria for Mediterranean use:

- Winter: Exterior t = 0°C
Interior t = 20°C ±1°C
- Summer: Exterior t = 38°C (R.M. = 70%)
Interior t = 22°C ±1°C (R.M. = 55%)

ELECTRICAL SYSTEM

Main Generators
2 x 50 kW Kohler

Automatic parallel between generators

ASEA 36 kVA shore power converter

DECK EQUIPMENT

Docking Capstans

MIUR VR 4000

Vertical Windlass

MIUR VRC 4500

Anchor

2 x 225 Kg (2 x 496 pound)

Anchor Chain

2 x 137.5 mt, diametro 14 mm (2 x 451 ft, diameter 0,55 inches)

Gangway

Electro-hydraulic Bitecnomare "Magnum due" : 5,3 mt X 0,6 mt (17.4 ft x 2 ft)

Crane

Sanguinetti (2000 Kg max load)

APPLIANCES

Galley

- AEG Induction hob HK874400FB
- Miele dishwasher speed plus PG8056
- Nr 2 Miele ed/cs fridge k 14820 sd
- Miele hood da 3490
- Nr 2 MKN Combi oven Junior

Dinette

- Miele Microwave 6022SC
- Miele ed/cs fridge k 14820 sd
- Miele Freezer FN12827
- Miele washing machine WKH130
- Miele tumble dryer TKG450 WP

Lazarette

- Miele washing machine WKH130
- Miele tumble dryer TKG450 WP

Sun deck

- LYNX gas bbq Grills 27"
- Isotherm Drawer Box DR 105 L Inox
- Isotherm ice maker icedrink clear

Upper deck cockpit

- Isotherm Drawer Fridge DR 85 Inox

Main deck cockpit

- Isotherm Cruise 90 Freezer inox
- Isotherm Ice maker icedrink clear inox
- Isotherm Drawer Box DR 105 L Inox

TECHNICAL SPECIFICATION

ENTERTAINMENT SYSTEM

Main salon

- TV LED Samsung Tv (55") + TV lift
- Denon amplifier
- Kit Bose 5 and subwoofer
- Denon DVD Bluray player
- Console Sony Playstation 4
- Sonos connect
- I Pad Air 128 GB
- Dock station I Pad Air
- Apple TV
- Telephone Jacob Jensen

Owner Cabin

- TV LED Samsung Tv (46")
- Sonos playbar
- Sonos subwoofer
- I Pad Air 128 GB
- Dock station I Pad Air
- Apple TV
- Telephone Jacob Jensen

Sky lounge

- TV LED Samsung Tv (55") + TV lift
- Denon amplifier
- Kit Bose 5 and subwoofer
- Denon DVD Bluray player
- Console Sony Playstation 4
- Sonos connect
- I Pad Air 128 GB
- Dock station I Pad Air
- Apple TV
- Telephone Jacob Jensen

VIP Cabin STB

- TV LED Samsung Tv (40")
- Denon amplifier
- 2 x Bose speakers
- I Pad mini 128 GB
- Dock station I Pad mini
- Apple TV
- Telephone Jacob Jensen

VIP Cabin PTS

- TV LED Samsung Tv (40")
- Denon amplifier
- 2 x Bose speakers
- I Pad mini 128 GB
- Dock station I Pad mini
- Apple TV
- Telephone Jacob Jensen

Guest Cabin PTS

- TV LED Samsung Tv (22")
- Denon amplifier
- 2 x Bose speakers
- I Pad mini 16 GB
- Dock station I Pad mini
- Apple TV
- Telephone Jacob Jensen

Guest Cabin STB

- TV LED Samsung Tv (22")
- Denon amplifier
- 2 x Bose speakers
- I Pad mini 16 GB
- Dock station I Pad mini
- Apple TV
- Telephone Jacob Jensen

Dinette

- TV LED Samsung Tv (22")
- Denon amplifier
- 2 x Bose speaker
- I Pad Air 128 GB
- Dock station I Pad Air
- Apple TV

Captain Cabin

- TV LED Samsung Tv (22")
- Denon amplifier
- 2 x Bose speaker
- I Pad Air 128 GB
- Dock station I Pad Air
- Apple TV
- Telephone Jacob Jensen

Wheelhouse

- Bose soundlink Bluetooth
- Telephone Panasonic / display LCD

Galley

- Bose soundlink Bluetooth

Lazarette

- Sonos Connect amplifier
- 4 x JL speakers
- I Pad mini 16 GB
- Telephone Jacob Jensen

Main deck cockpit

- Sonos Connect amplifier
- 2 x JL speakers
- I Pad mini 128 GB

Upper deck cockpit

- Sonos Connect amplifier
- 4 x JL speakers + subwoofer

Upper deck foredeck

- Sonos Connect amplifier
- 2 x JL speakers

Sun deck

- Sonos Connect amplifier
- 4 x JL speakers + subwoofer
- I Pad mini 128 GB

Wi-Fi

- Cisco switch 24 port
- Nr 6 Access points

NAVIGATION AND COMMUNICATION EQUIPMENT

- Nr°4 Furuno monitor 19"
- Nr°1 radar Furuno FAR2117, radome 8 ft, X band
- Nr°1 radar Furuno Navnet 3D MFDBB MPU, radome 6 ft
- Nr°2 GPS Furuno GP-33
- Nr°1 Furuno trasducer 525ST
- Nr°1 Data repeater FI-501
- Nr°3 Data repeater FI-504
- Nr°1 wind sensor FI-5001
- Nr°1 Furuno Satellite Compass SC50
- Nr°1 Furuno AIS FA150
- Nr°1 Furuno Navtex NX700B
- Nr°2 Furuno Data Repeater FI-504 for crew mess
- Nr°1 NAVNET TZT 9"
- Nr°1 monitor for TVCC, Neovo X-15AV
- Nr°1 Transas ECS SW NAVISAILOR 4000
- Nr°1 Raytheon Anshutz Gyrocompass Standard 22
- Nr°1 Raytheon Anshutz NP60
- Nr°1 Radio telephone VHF FURUNO FM8900S GMDSS Class A
- Nr°1 Radio telephone VHF FURUNO FM-4721,DSC
- FLIR M-618CS

CCTV SYSTEM

- CCTV camera on engine room and main deck
- CCTV monitor in wheelhouse and crew area

ANTENNAS

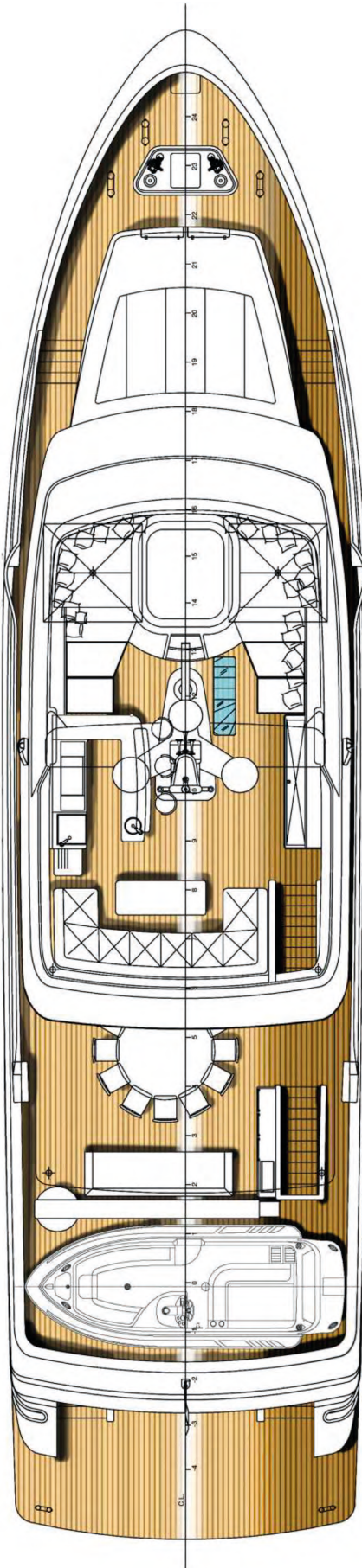
- Nr°1 Satellite Antenna VSAT Intellian T100W (1.05 mt, 3.4 ft)
- Nr°1 Satellite Antenna TVSTAT Intellian V100GX
- GSM antenna
- FM receiver

OTHER

- Movable swimming platform: Transformer Opacmare 4 steps / 980 Kg
- Nr 20 underwater lights
- Nr 4 wind stopper doors
- Wind protective awning for main deck (Norvegese)
- Skylight glass on sun deck with motorized curtain
- Plug-in shower on swimming platform
- Diving compressor
- Sea chests Cathelco anti fouling system
- Sun deck aft awning
- Upper deck aft awning

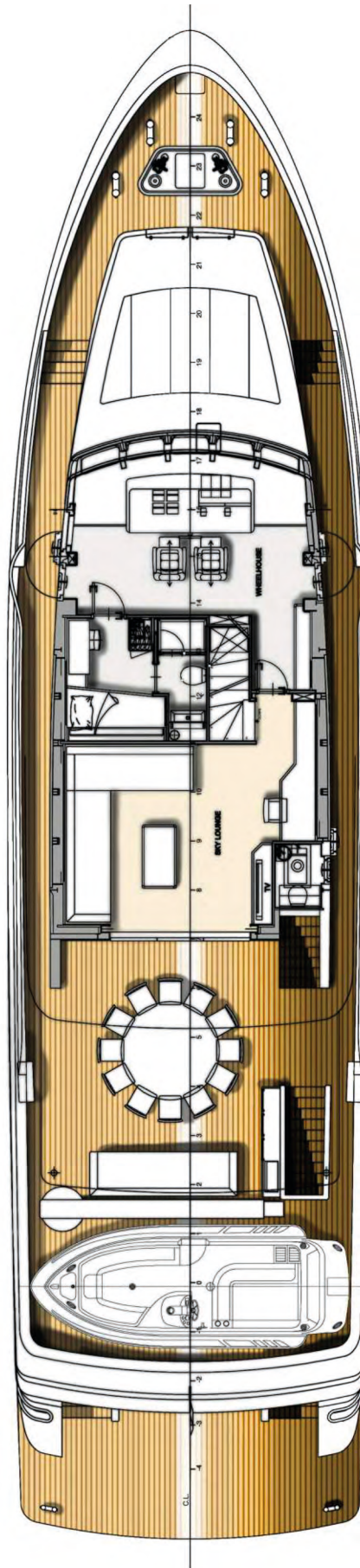
ARRANGEMENT PLAN





Sun Deck

47 m²
505.9 ft²



Upper Deck

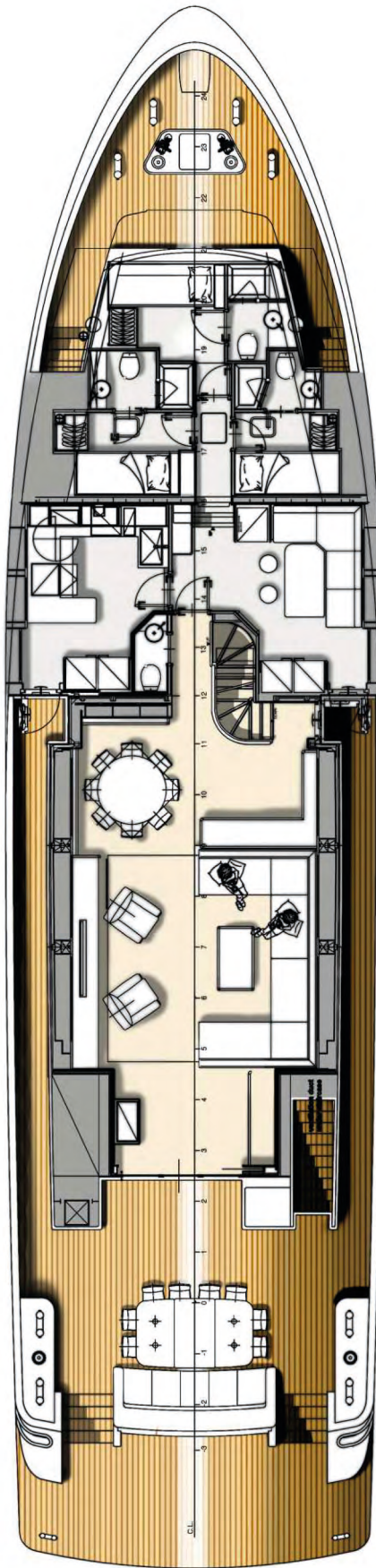
Forward
sunbed area
13.7 m²
147 ft²

Wheelhouse
15.3 m²
164.6 ft²

Captain Cabin
7.7 m²
82.8 ft²

Sky Lounge
18.9 m²
203.4 ft²

Aft Cockpit
51.8 m²
55.5 ft²



Main Deck

Crew area
22.3 m²
240 ft²

Dinette
10.7 m²
115 ft²

Galley
8.5 m²
91.4 ft²

Main Salon
44.4 m²
477.9 ft²

Aft Cockpit
24.1 m²
259.4 ft²

Lower Deck

Owner Cabin
23.2 m²
249.7 ft²

Guest Cabin
STB
12.4 m²
133.4 ft²

Guest Cabin
PTS
13.6 m²
146.3 ft²

VIP Cabin PTS
12.4 m²
133.4 ft²

Engine Room
33.8 m²
363.8 ft²

Lazarette
25.8 m²
277.7 ft²

Swimming
Platform
13.3 m²
143 ft²

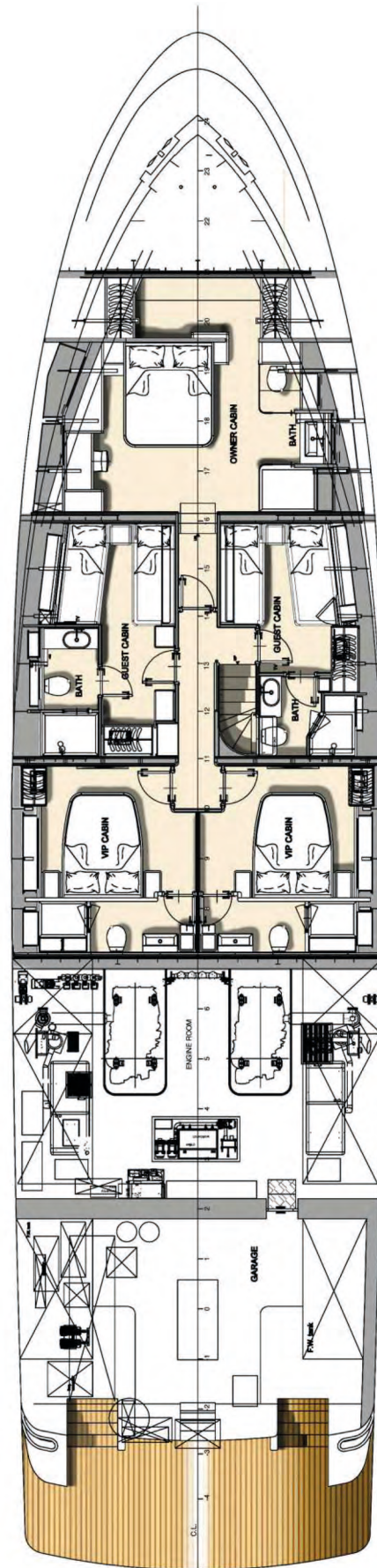


PHOTO GALLERY EXTERIOR

ACALA











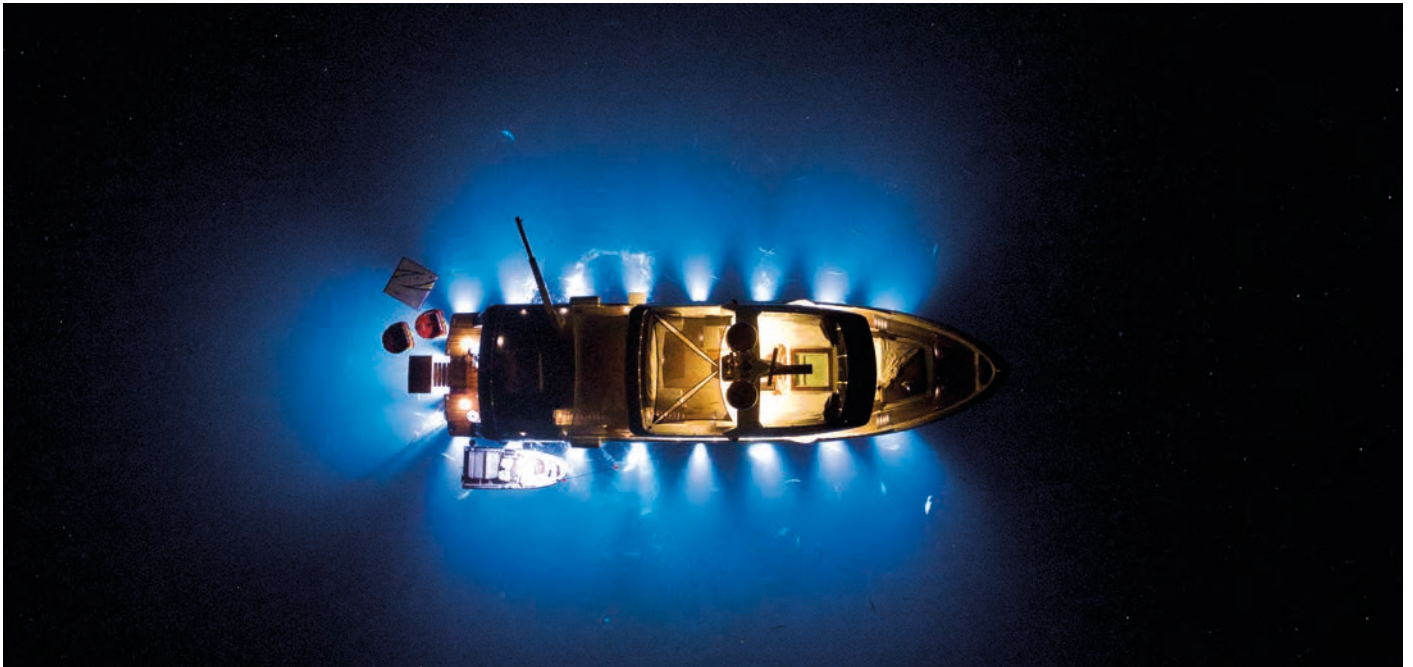
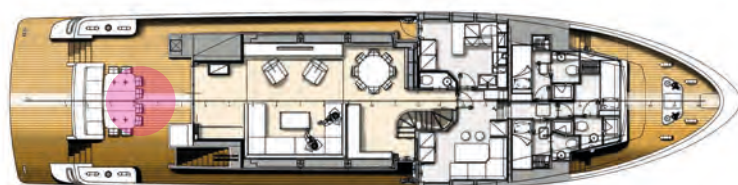


PHOTO GALLERY DECKS

ACALA



Main Deck Cockpit





Upper Deck Cockpit





Upper Deck Foredeck





Sundeck

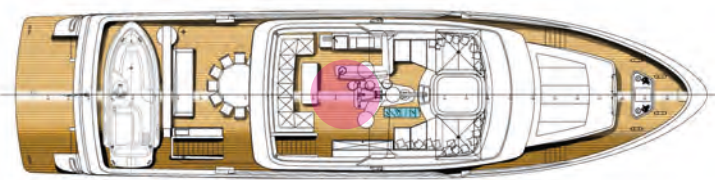
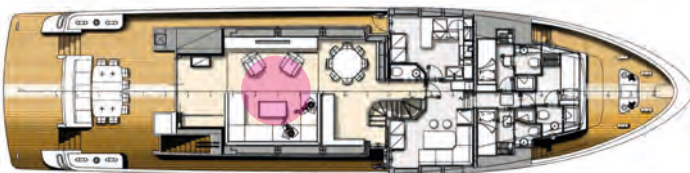


PHOTO GALLERY INTERIORS

ACALA

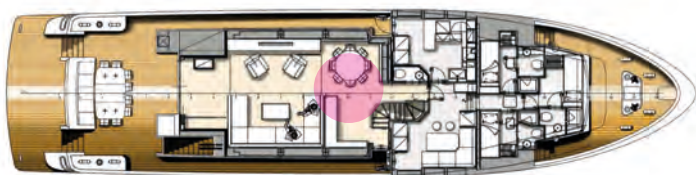


Main Salon



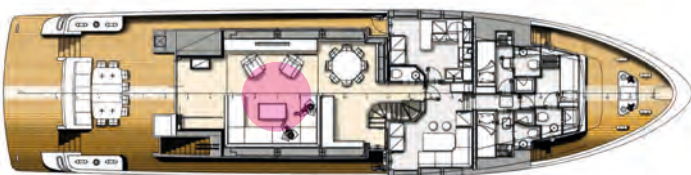


Main Salon



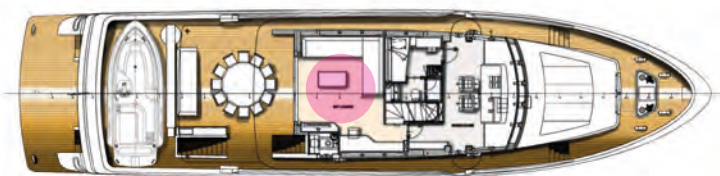


Main Salon





Sky Lounge





Owner Cabin





Owner Cabin



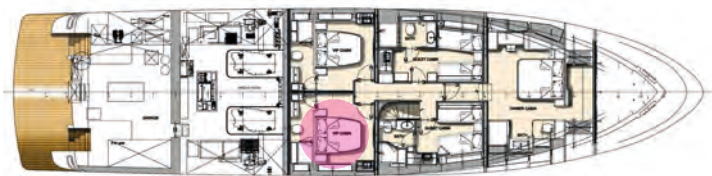


Owner Cabin Bathroom





Vip Cabin Starboard





Vip Cabin Starboard

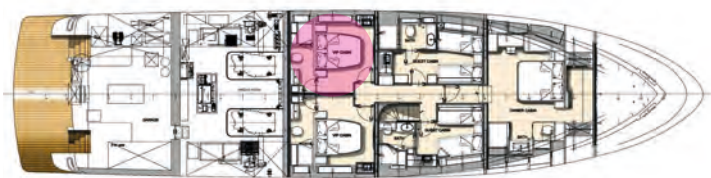


Vip Cabin Starboard - Bathroom





Vip Cabin Port





Guest Cabin Starboard



Guest Cabin Starboard – Bathroom





Guest Cabin Port

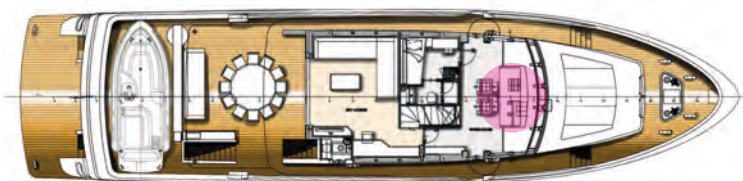


Guest Cabin Port – Bathroom



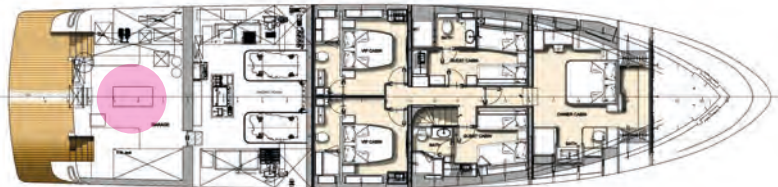


Wheelhouse



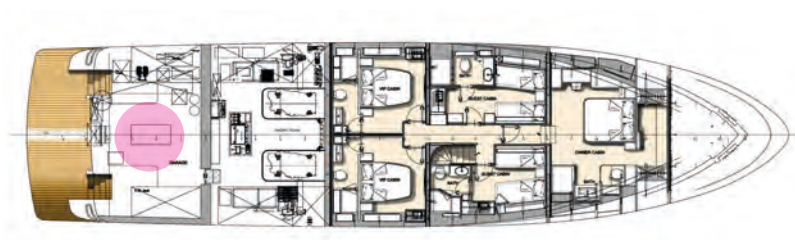


Lazarette - Diving Club



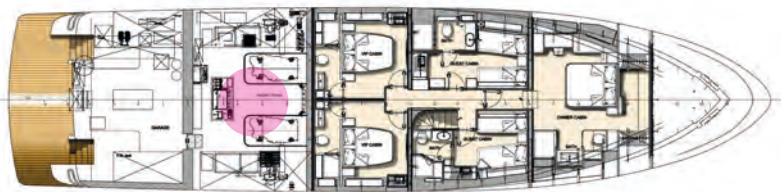


Lazarette - Diving Club



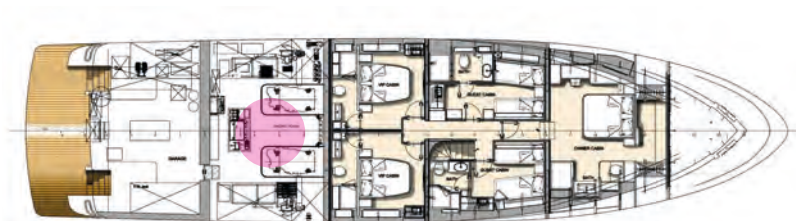


Engine Room





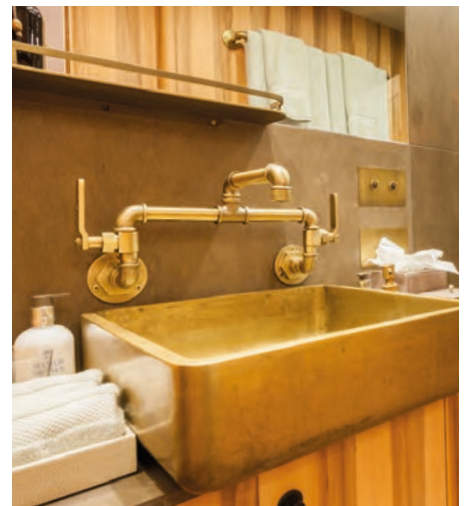
Engine Room



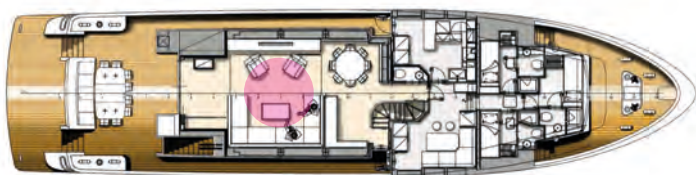
BUILD DETAILS

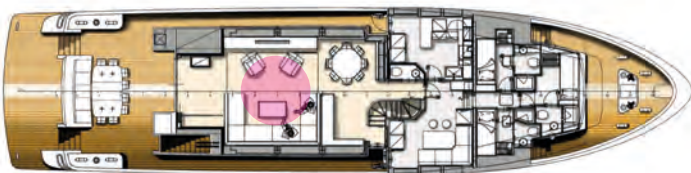


Details



INTERIOR REFIT PROPOSAL









CANTIERE
DELLE
MARCHE

beyond yachting experience